

ECD Public Partners Committee Purpose, Role, Accomplishments and Challenges



Cities Fit for Children Provincial Summit

October 23, 2009

Outline of Presentation

This presentation will address the following areas:

- **New Westminster – Context**
- **ECD Committee**
- **Public Partners Committee**
 - Purpose
 - Membership and Structure
 - Accomplishments
 - Challenges
- **Questions**



New Westminster – Context

- The City is centrally located within Metro Vancouver.
- The City has a population of about 64,000 people.
- The City is comprised of five sub-areas; however, for the purposes of hub development; the Uptown and Downtown have been combined.
- There were 3,455 children aged 0 to 5 years in 2006, which represented about 5.9% of the total population.



ECD Committee – Beginnings

- **March 2003:**
The Children's First initiative was introduced to service providers, which acted as the impetus for an integrated service delivery system.
- **September 2003:**
A consultant was hired to develop a five-year ECD Strategic Action Plan.

An ECD Children's First Committee was formed to improve outcomes for children/families based on the plan.
- **Spring 2004:**
Start of plan implementation.



ECD Committee – Purpose



- The ECD Committee emerged from the ECD Children’s First Committee.
- The committee is comprised of service providers serving the 0-6 population, civic and government representatives, parents and interested community members.
- The committee meets monthly to exchange information, endorse recommendations of its eight action teams, and to make decisions regarding funding allocations.

Public Partners – Beginnings



- **February 2007:**

Public Partners meet for the first time facilitating management level decision-making among the stakeholder organizations.

- **December 2007:**

Public Partners signed off on a Memorandum of Understanding.

Public Partners – Purpose

- Coordinate the planning of member organizations to meet the identified needs and opportunities of the community as related to ECD hub development.
- Identify and access funding and other resources.
- Support and advocate on behalf of the development of ECD hubs.
- Play a facilitative role with the ECD Committee, its Action Teams and others, as required.
- Provide support, advice, recommendations, feedback, and expertise to the MCFD ECD Community Development Worker.
- Consider any other purposes as identified by the community.



Public Partners – Hub Development

The primary purpose of the Public Partners is to facilitate ECD Hub Development:

- ECD hubs support the healthy development of young children and their families; and include at least two early childhood development or family strengthening services, one of which is licensed child care.
- ECD hubs act as focal points for their neighbourhoods and enable families to obtain information and seamlessly access a continuum of services related to their needs.
- ECD hubs have been proven to enhance child outcomes, including school readiness and success. They also facilitate inter-sectoral collaboration and partnership building.



Public Partners – Membership

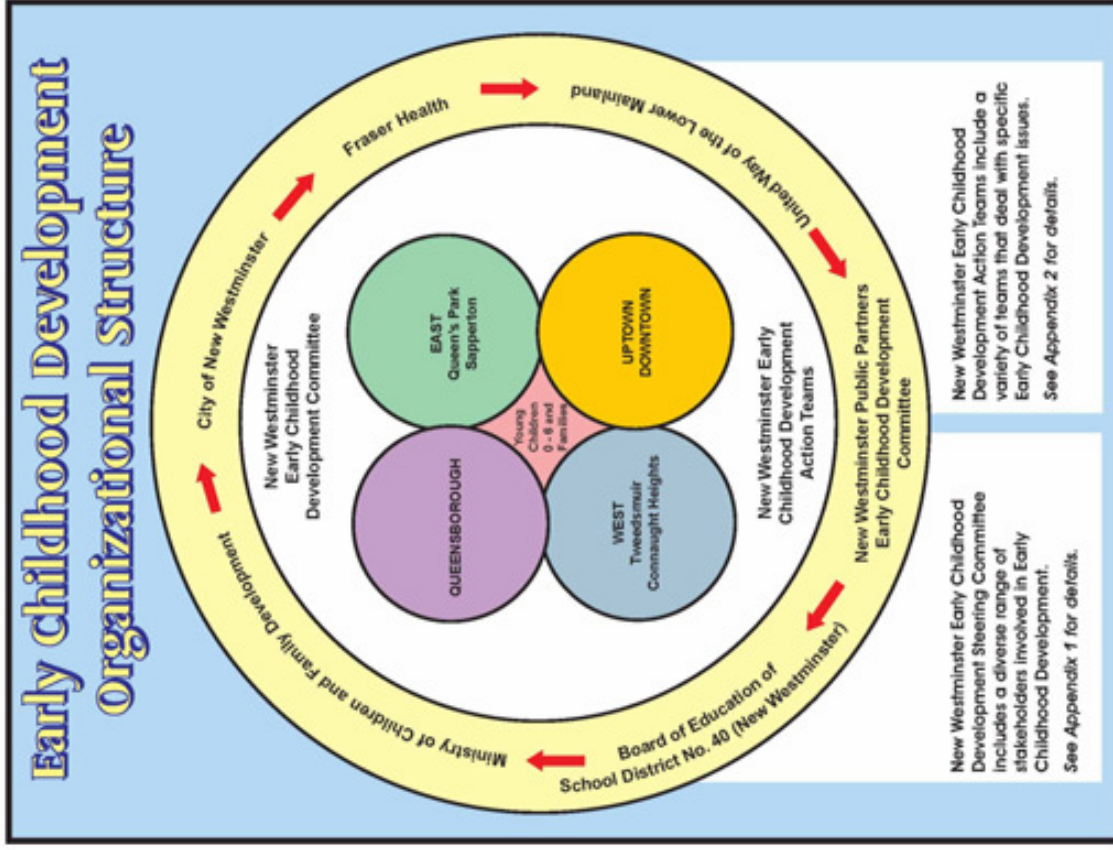
The Public Partners include:

- **City of New Westminster** (Parks, Culture and Recreation and Social Planning)
- **Fraser Health** (Health Promotion and Prevention)
- **MCFD**
- **School District #40**
- **United Way of the Lower Mainland**

Staff from each of the partnering organizations are at a senior level and have the authority to influence or make positive change within their organizations.



Public Partners – Organizational Structure



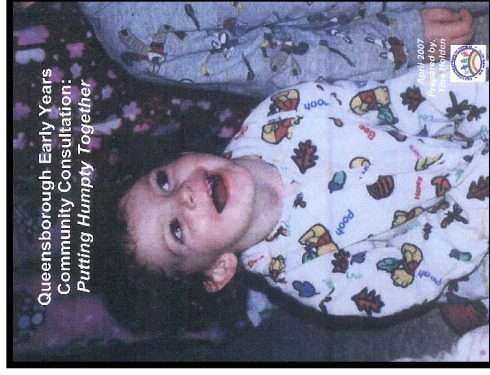
Early Childhood Development Organizational Structure

Appendix 1	Appendix 2
<p>New Westminister Early Childhood Development Steering Committee</p> <ul style="list-style-type: none"> · Ministry of Children & Family Development · Board of Education of School District # 40 · Fraser Health · United Way Lower Mainland · City of New Westminister · Lower Mainland Purpose Society · Western Society for Children · Family Services of Greater Vancouver · New Westminister Family Place · St Bamabas Daycare · Kolumbia Inn Daycare · Queen's Ave Daycare · Simon Fraser Society for Community Living · Fraserside Community Services Society · Bumaby New Westminister Infant Development Program · Child Care Resource & Referral · Cameray Child & Family Services · New Westminister Public Library · Shiloh-Sixth Ave United Church · Spirit of the Children Society · Centre for Ability · Literacy Now · Douglas College · Parents 	<p>New Westminister Early Childhood Development Action Teams</p> <ul style="list-style-type: none"> · Child Care · Communications · ECD Parent Advisory · Middle Childhood · Queensborough Hub Development · Strategic Action Planning/Evaluation/Funding · Understanding the Early Years Project · Uptown/ Downtown Hub Development

ECD Accomplishments

Planning for two of the four hubs is well underway.

- Needs assessments have been completed for Queensborough and the Uptown/Downtown.
- Action teams have been established to conduct more detailed planning and to advocate on behalf of hub development.
- Public Partners are working to identify opportunities, realize funding and solidify support within their respective organizations.



The Queensborough Experience

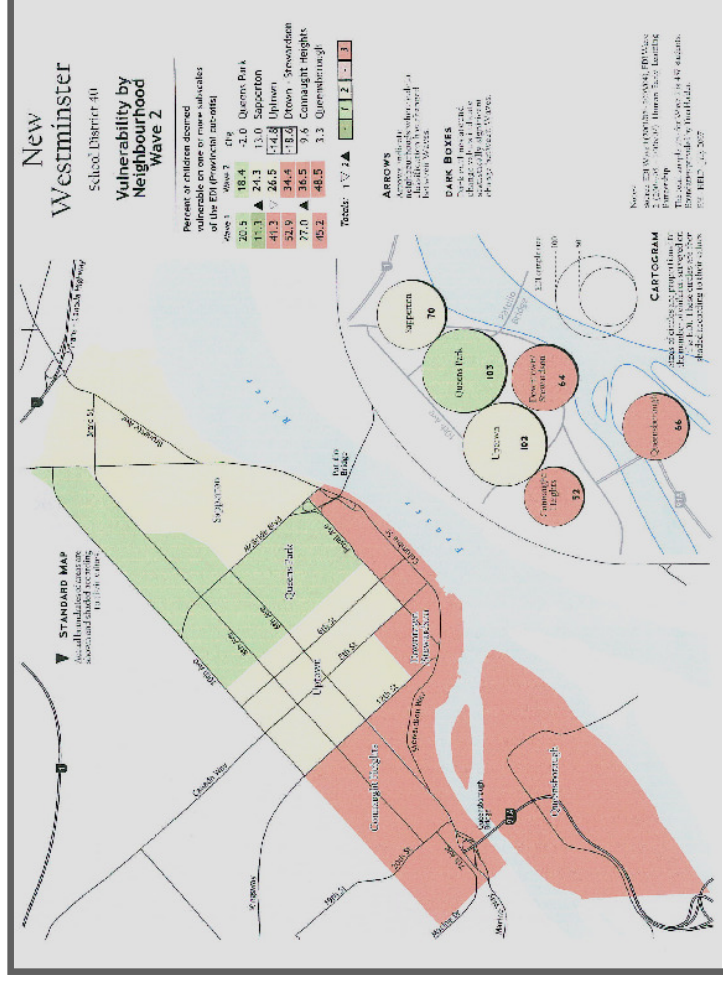
- Action team recommended that a preliminary concept plan be developed at the Queensborough Community Centre.
- Given that the centre was slated for a \$6.2 million expansion, there was an opportunity to accommodate a hub at this location.
- A compelling case was made for the incorporation of a hub. It highlighted the benefits to the community, both social and economic, and the fact that a hub would address the high childhood vulnerability levels.
- In October 2008, City Council endorsed the preliminary concept plan for the hub.



The Queensborough Experience

Vulnerability by Neighbourhood as Measured by the EDI – Waves 1 and 2:

- Increase from 45.2% (Wave 1) to 48.5% (Wave 2) for the Queensborough neighbourhood.
- Next highest neighbourhood in terms of vulnerability is 36.5%; lowest is 18.4%.



The Queensborough Experience

As outlined in the preliminary concept plan, the hub would:

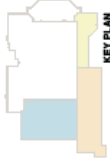
- comprise over 10,000 square feet on two levels;
- incorporate close to 60 licensed child care spaces;
- accommodate a range of early childhood development and family strengthening services;
- provide both dedicated and multipurpose spaces.



The Queensborough Experience

David Norman ARCHITECT
 100 West Beaver Creek Road
 Richmond Hill, Ontario L4B 1N2
 Tel: 905.709.8888 Fax: 905.709.8889

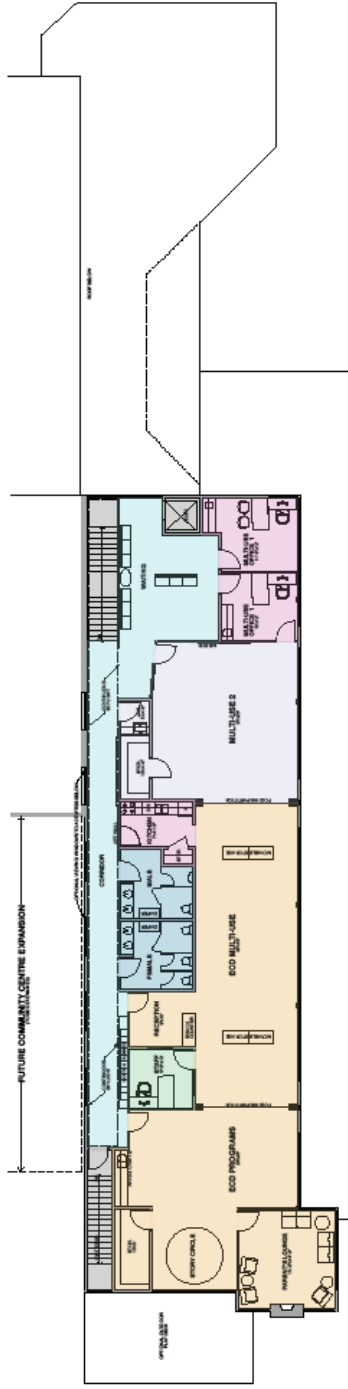
ZHARIEL BUILDING AREA:
 ARCHITECT: D.N.A.
 ARCHITECTURE: D.N.A.
 INTERIOR DESIGN: D.N.A.
 TOTAL FLOOR AREA: 10,000 SQ. FT.



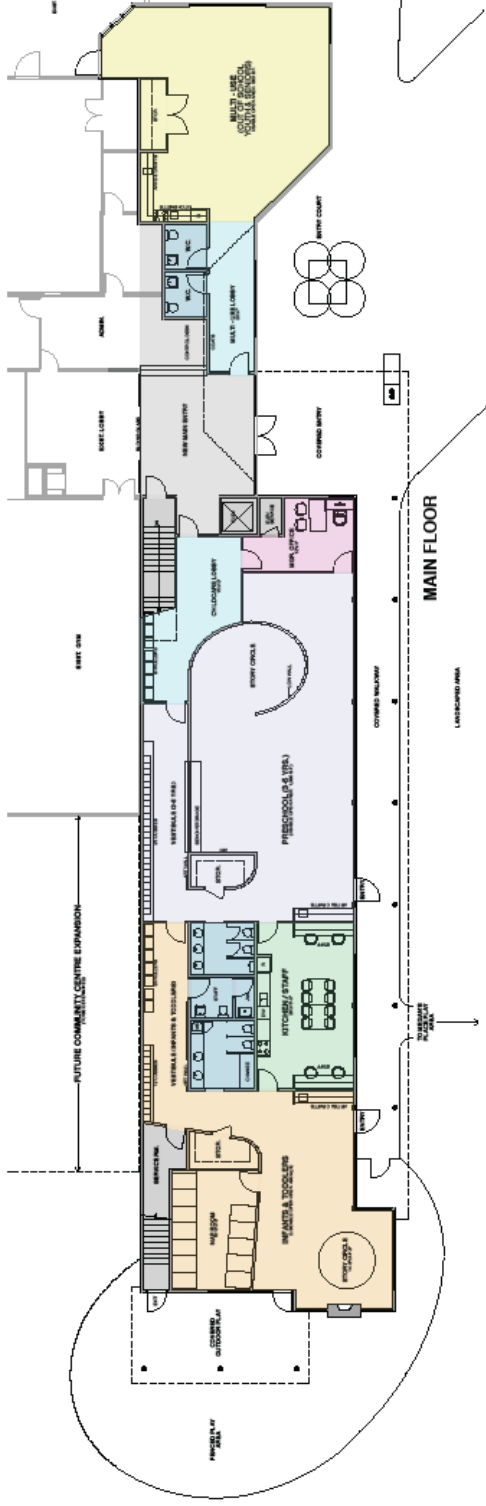
NO.	DESCRIPTION	DATE
5	REVISIONS	
4	CONCEPTUAL DEVELOPMENT	
3	CONCEPTUAL DEVELOPMENT	
2	PRELIMINARY DEVELOPMENT	
1	PRELIMINARY	
0	CONCEPT	

THIS DRAWING IS THE PROPERTY OF DAVID NORMAN ARCHITECT. IT IS TO BE USED ONLY FOR THE PROJECT AND SITE SPECIFICALLY IDENTIFIED HEREON. IT IS NOT TO BE REPRODUCED, COPIED, OR TRANSMITTED IN ANY FORM OR BY ANY MEANS, ELECTRONIC OR MECHANICAL, INCLUDING PHOTOCOPYING, RECORDING, OR BY ANY INFORMATION STORAGE AND RETRIEVAL SYSTEM, WITHOUT THE WRITTEN PERMISSION OF DAVID NORMAN ARCHITECT.

DESIGNER'S NOTE: THIS DRAWING IS A PRELIMINARY LAYOUT. IT IS NOT TO BE USED FOR CONSTRUCTION. ANY CHANGES TO THIS DRAWING MUST BE APPROVED BY DAVID NORMAN ARCHITECT. THIS DRAWING IS THE PROPERTY OF DAVID NORMAN ARCHITECT. IT IS TO BE USED ONLY FOR THE PROJECT AND SITE SPECIFICALLY IDENTIFIED HEREON. IT IS NOT TO BE REPRODUCED, COPIED, OR TRANSMITTED IN ANY FORM OR BY ANY MEANS, ELECTRONIC OR MECHANICAL, INCLUDING PHOTOCOPYING, RECORDING, OR BY ANY INFORMATION STORAGE AND RETRIEVAL SYSTEM, WITHOUT THE WRITTEN PERMISSION OF DAVID NORMAN ARCHITECT.



SECOND FLOOR



MAIN FLOOR

PROJECT:
 QUEENSBOROUGH
 COMMUNITY CENTRE
 CHILDCARE HUB
 600 EWEAN AVE.
 NEW WESTMINSTER, B.C.

DRAWING:
 PRELIMINARY
 LAYOUT

DESIGNED BY:	DAVID NORMAN ARCHITECT
DATE:	2024.05.15
SCALE:	1/8" = 1'-0"
PROJECT NO.:	2024.05.15
DATE:	2024.05.15

SK.1R2

The Queensborough Experience

- To date, the Public Partners have made the following contributions:
 - The two studies and the preliminary concept plan was funded by MCFD. Depending on the timing of a hub, there may also be capital dollars available through MCFD.
 - The ongoing work of the ECD Committee and Public Partners which is being funded by the United Way of the Lower Mainland.
 - The recent opening of a StrongStart Centre and 20 school age care spaces at the local elementary school by the School District. These initiatives contribute to and build a strong foundation for a hub.
 - The willingness of Fraser Health to consider providing services targeting the needs of parents and young children in Queensborough.
- The City is also playing an important role by considering the incorporation of a hub as part of the expansion to the community centre.

The Uptown/Downtown Experience

- Action team has completed needs assessment and is having to deal with the challenge of no obvious location for a hub.
- The area in question has two distinct population and commercial nodes and is separated by a steep hill. Additionally, the Uptown is far more populated than the Downtown but the latter is designated as a future growth concentration area.
- A possible opportunity involves the development of three new schools. The City and School District, through the Province's 'Neighbourhoods of Learning Project,' have submitted a proposal which calls for an ECD hub as part of the new middle school on the John Robson site.
- Again, this demonstrates the importance of documenting needs and identifying possible opportunities, as well as collectively working to capitalize on opportunities.

Other Benefits of Collaboration

Other benefits derived through partnership and enhanced collaboration include:

- **City of New Westminster / School District #40 Child Care Protocol**
- **New Westminster Community Schools Partners Committee**
- **New Youth Centre – inclusion of a range of health, leisure and social services**



Challenges

- Building Relationships and Trust
- Defining Roles
- Communicating Clearly



Questions

