

Intent: The intent of this district is to allow mixed-use development consisting of pedestrian-oriented commercial businesses and two storeys of residential development above.

Key Information:

Building Height: 40 feet or 3 storeys maximum.

C-2
COMMUNITY
COMMERCIAL
DISTRICTS (LOW RISE)

1. HEIGHT

40 feet or 3 storeys maximum. Height is measured from the average lot elevation (elevation at four corners of the site, divided by 4) to the top of a flat or mansard roof.

2. YARDS

Front Yard: no front yard required.

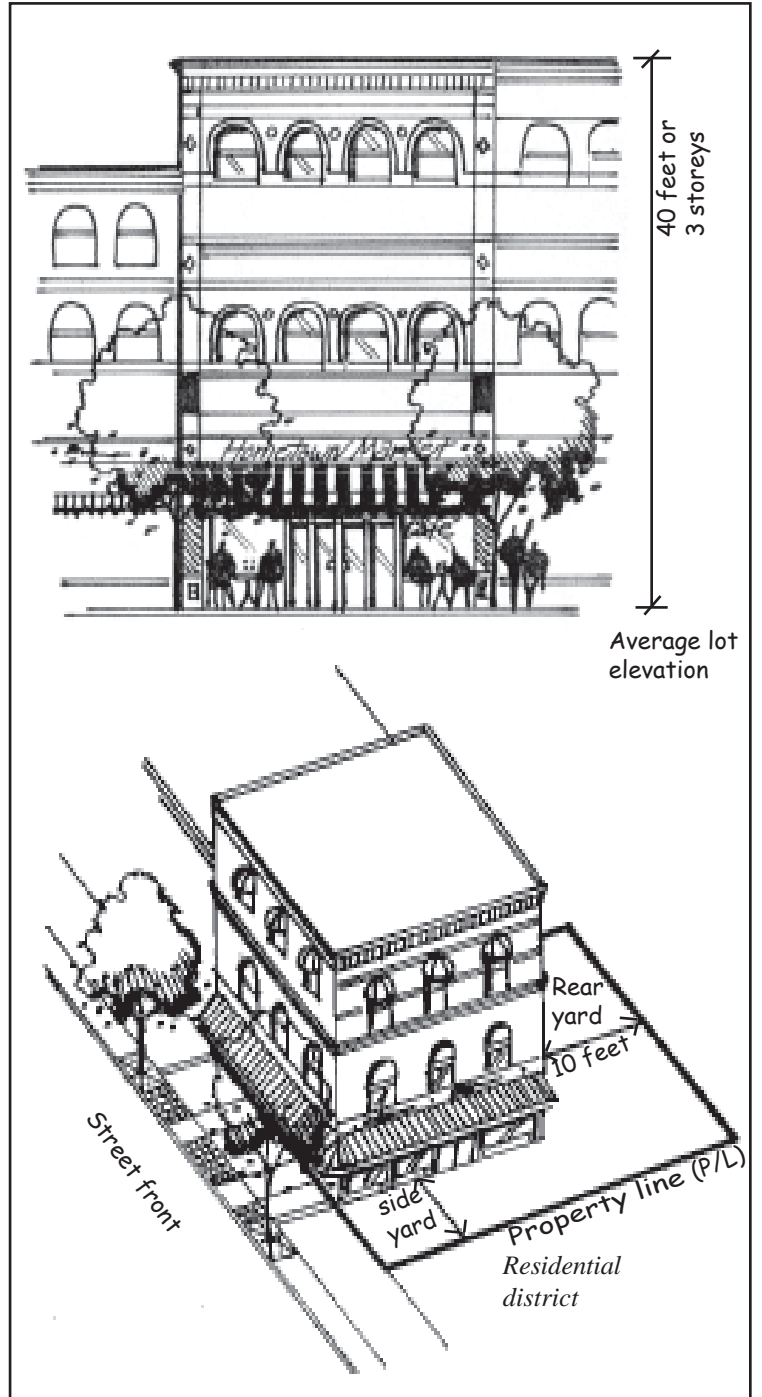
Side Yard: not required except where a site abuts a residential district, then it is required to have a side yard of 40% of the building height.

Rear Yard: a minimum of 10 feet except where a site abuts a residential district, then it is required to have a rear yard of 20% of site depth but need not exceed 35 feet.

Note

Some properties within this zone are subject to building lines, requiring additional setbacks. Please consult Section 180 of the Zoning Bylaw for further information.

City of New Westminster
Phone: (604) 527-4532 Fax: (604) 527-4511
Web: www.city.new-westminster.bc.ca/cityhall/planning/index.htm



Note: This is a summary of the zoning schedule only. For additional details, see City of New Westminster Zoning Bylaw No. 6680, 2001.