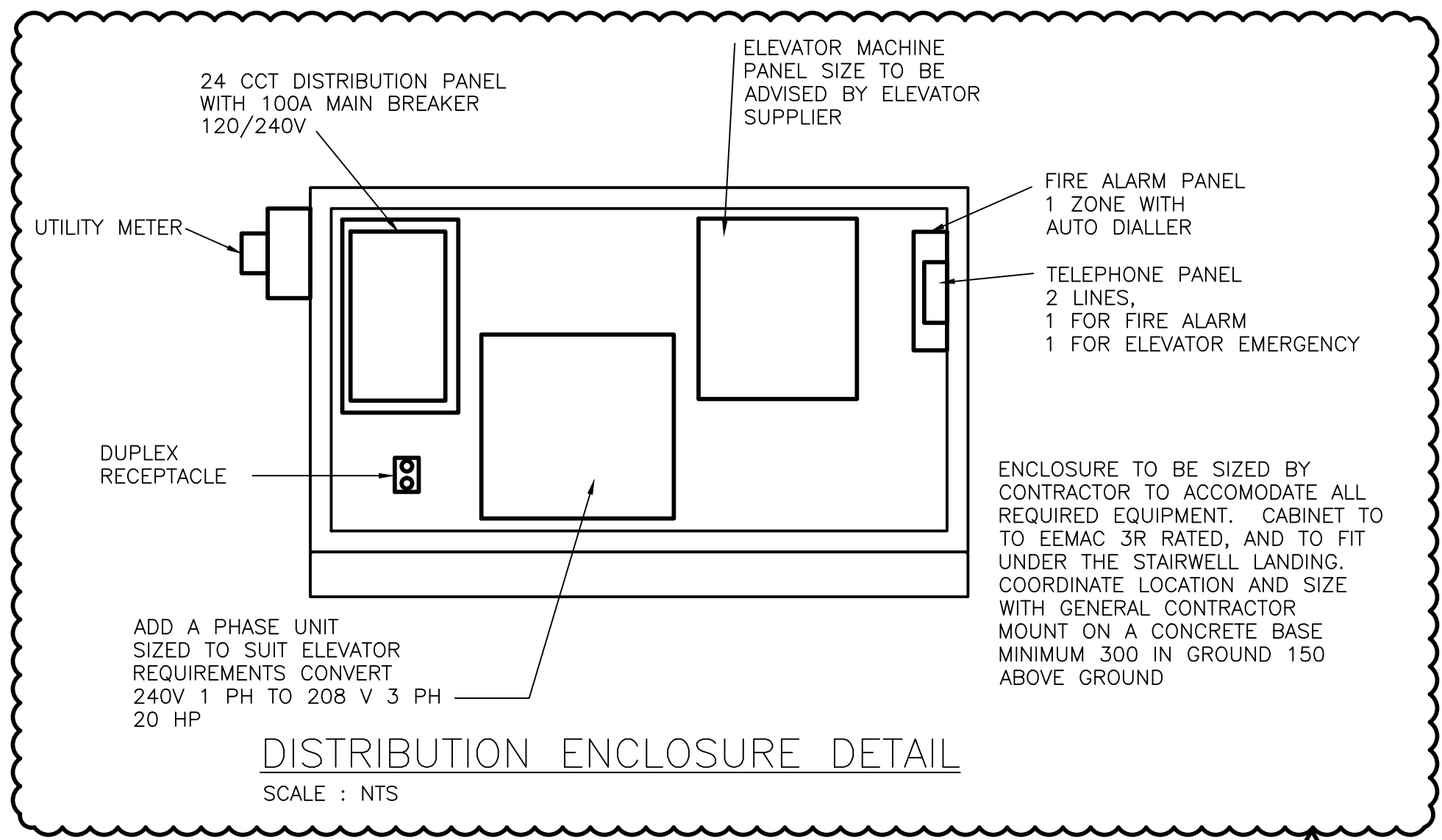


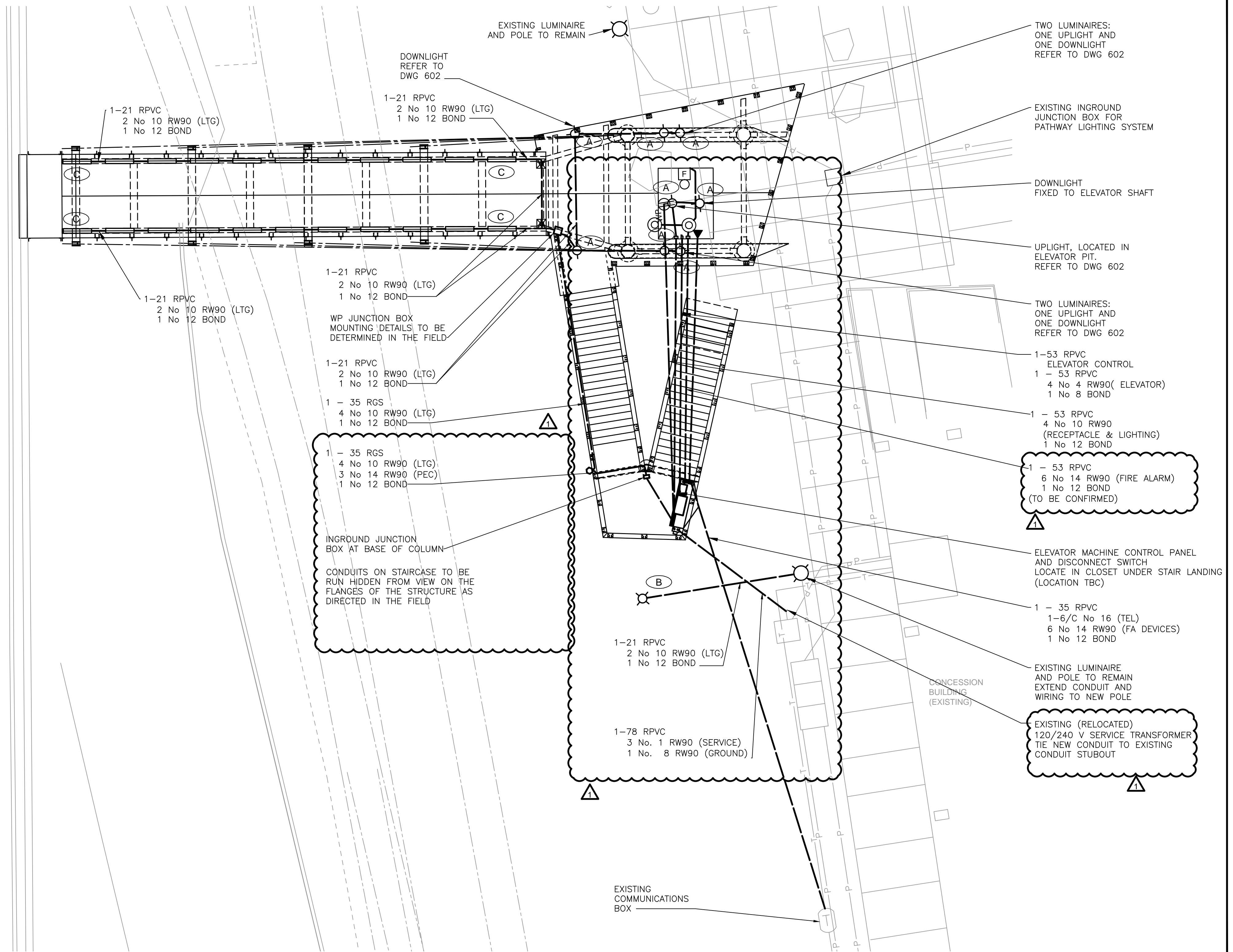
NOTES

1. INSTALL A SMOKE DETECTOR IN THE ELEVATOR PIT AND AT THE TOP OF THE SHAFT.
2. INSTALL FIRE ALARM BELL IN THE ANNULAR SPACE AROUND THE ELEVATOR CAB, APPROX. 2.4m ABOVE THE MAIN LEVEL GROUND. WIRE INTO DISTRIBUTION ENCLOSURE. CONTRACTOR TO DETERMINE FIRE ALARM SYSTEM WIRING AS REQUIRED BY SYSTEM SUPPLIER.
3. TYPE C LUMINAIRES TO BE INSTALLED IN THE CURB TRENCH. CENTRE LUMINAIRE IN TRENCH AND WIRE TOGETHER. BURN IN THE LIGHTS FOR A MINIMUM OF 168 HOURS PRIOR TO INSTALLING THE GLASS TRENCH COVER. REPLACE ANY LUMINAIRE THAT DOES NOT SURVIVE THE BURN-IN PERIOD.
4. INGROUND JUNCTION BOXES TO BE AE CONCRETE TYPE B937 WITH GALV STEEL CHECKERPLATE COVER MARKED "ELEC".
5. THREE LIGHTING CIRCUITS REQUIRED FOR STRUCTURE LIGHTING, 1 CCT WEST SIDE CURB LIGHTING, 1 CCT FOR EAST SIDE CURB LIGHTING, 1 CCT FOR ALL UP AND DOWN LIGHTS AND EXTERNAL LIGHTING FOR THE ELEVATOR. AN ADDITIONAL CIRCUIT IS REQUIRED FOR THE ELEVATOR CAB LIGHTING NEEDS.
6. ALL NEW STRUCTURE LIGHTING, AND EXTERNAL ELEVATOR LIGHTING TO BE CONTROLLED FROM NEW LIGHTING CONTROL SYSTEM. UPGRADE CONTACTORS AS NEEDED TO ACCEPT THE ADDITIONAL LIGHTING CIRCUITS REQUIRED BY THIS CONTRACT. NEW POLE LIGHTING TO BE CONTROLLED FROM EXISTING LIGHTING CONTROL SYSTEM.
7. CONDUITS ON THE STRUCTURE TO BE RUN HIDDEN FROM GENERAL PUBLIC VIEW TO THE EXTENT POSSIBLE. ROUTING SHOWN ON DRAWINGS IS GENERAL ONLY, INSTALL CONDUITS AND SECURE TO STRUCTURE AS DIRECTED IN THE FIELD.
8. REMOVE AND REPLACE THE EXISTING SIDEWALK PANELS AS NEEDED TO INSTALL NEW CONDUITS SAWCUT AND ENSURE NO DAMAGE IS CAUSED TO ADJACENT PANELS. IF ADJACENT PANELS ARE DAMAGED, THEY WILL BE REPLACED AT CONTRACTORS COST.



LEGEND

- CONDUIT
- NEW DISTRIBUTION ENCLOSURE
- WP WEATHER PROOF DUPLEX RECEPTACLE
- WALL MOUNTED TELEPHONE OUTLET
- FIRE ALARM
- SMOKE DETECTOR
- COLOR KINETICS eW BURST COMPACT POWERCORE PHILLIPS 12NC 910503701664
- SELUX RSA-1-H070T6-SP-120-L-SM1091 LUMINAIRE ON 9m ALUMINOUS SRSM-6 POLE, WITH RAL-XXX FINISH. TO MATCH EXISTING
- COLOR KINETICS eW QLX POWERCORE 9 DEGREES BY 9 DEGREES, 4 FT STRIP LIGHT



PLAN
SCALE 1:100

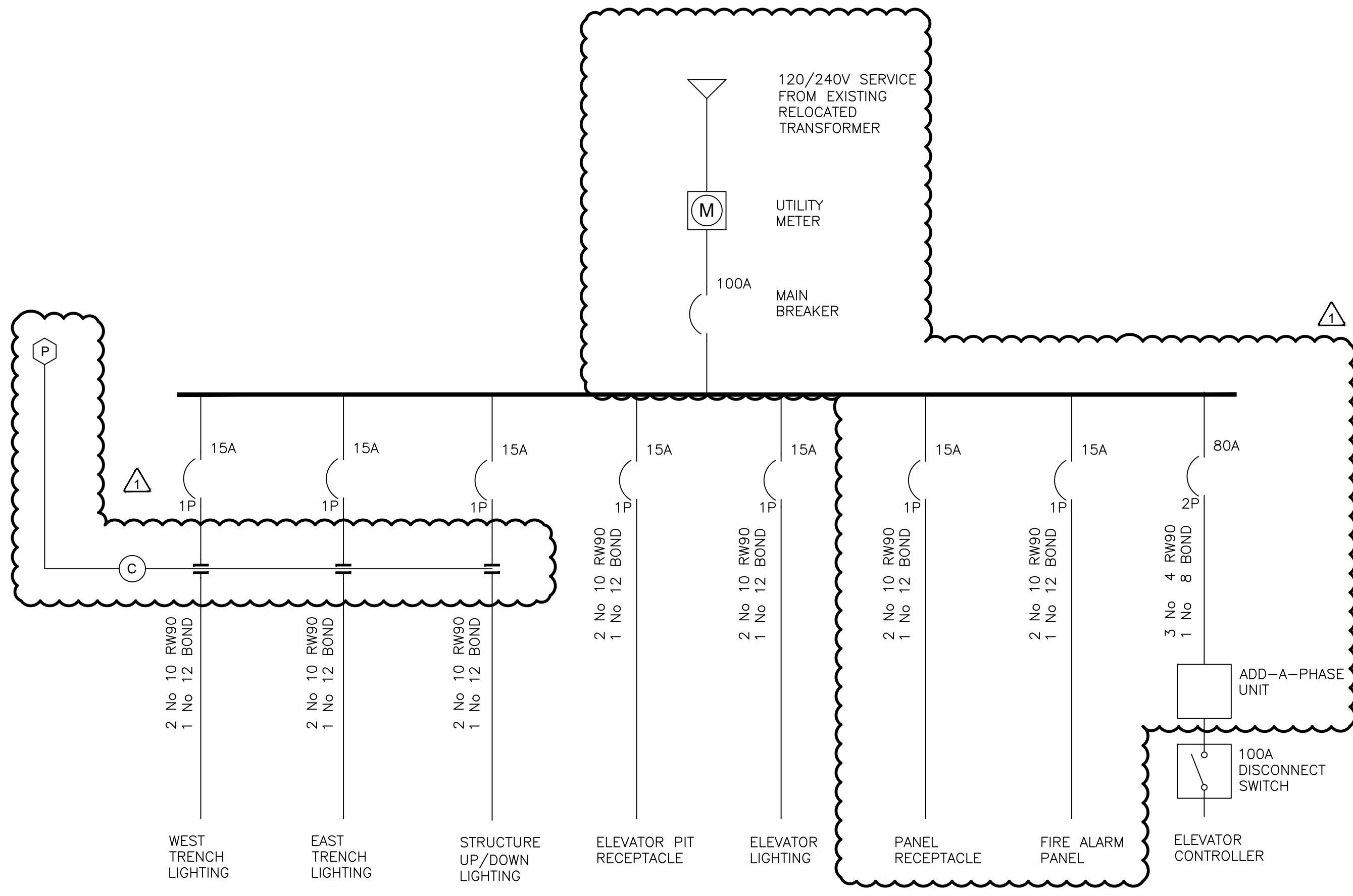
NO.	DATE	ENG.	BY	SUBJECT
1	2013/07/26	DF	TG	ISSUED FOR ADDENDUM 3
0	2013/06/21	DF	TG	ISSUED FOR TENDER
REVISIONS				

PROJECT No.	20132297
SCALE	AS SHOWN
DRAWN	
DESIGNED	TERESA GRGIC

CITY OF NEW WESTMINSTER	
ELECTRICAL LIGHTING PLAN	

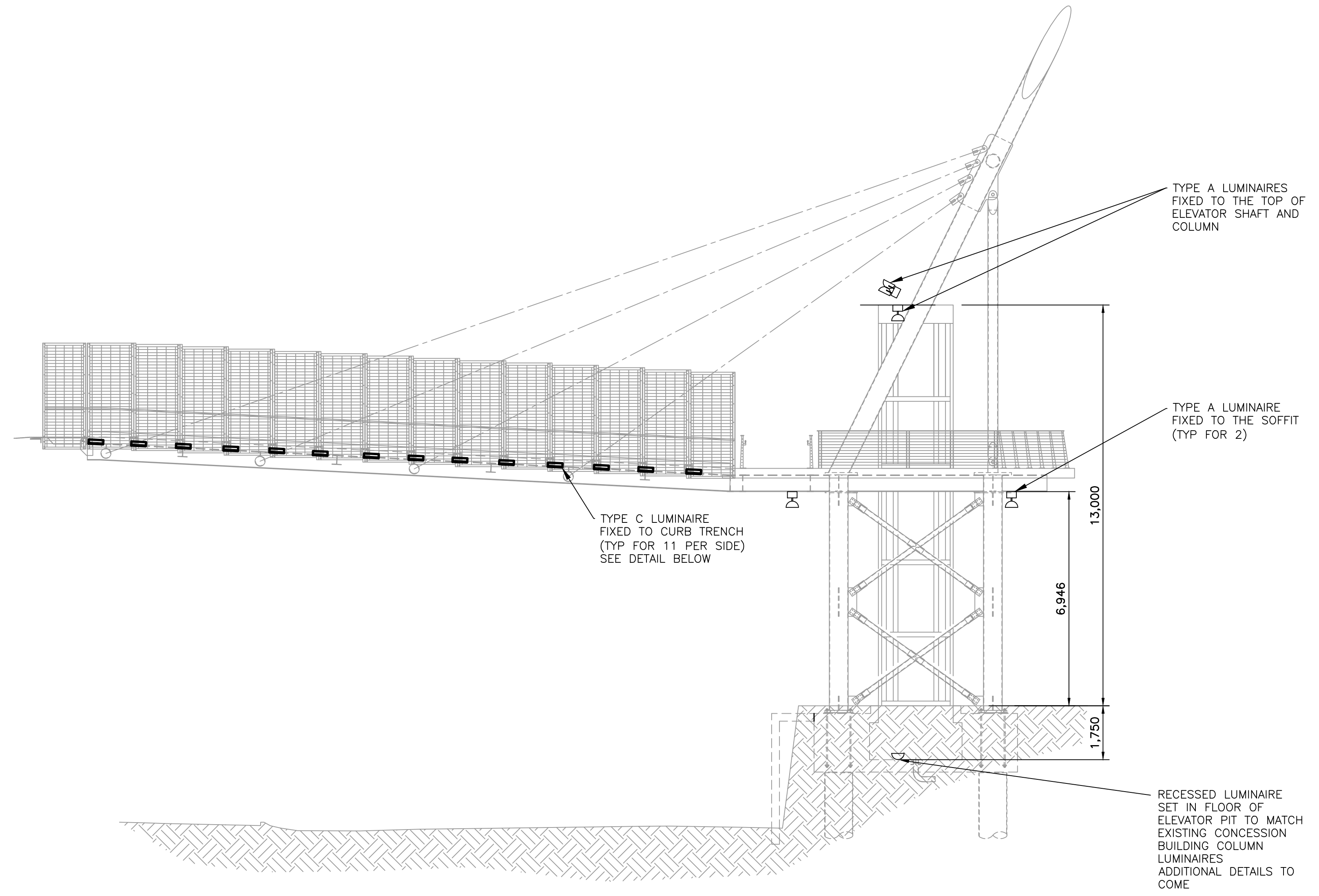
4TH STREET PEDESTRIAN OVERPASS		
DRAWING NUMBER	REV. NO.	SHEET
2297-601	1	1/2

This Drawing is For The Use Of The Client And Project Indicated
No Representations of Any Kind Are Made To Other Parties

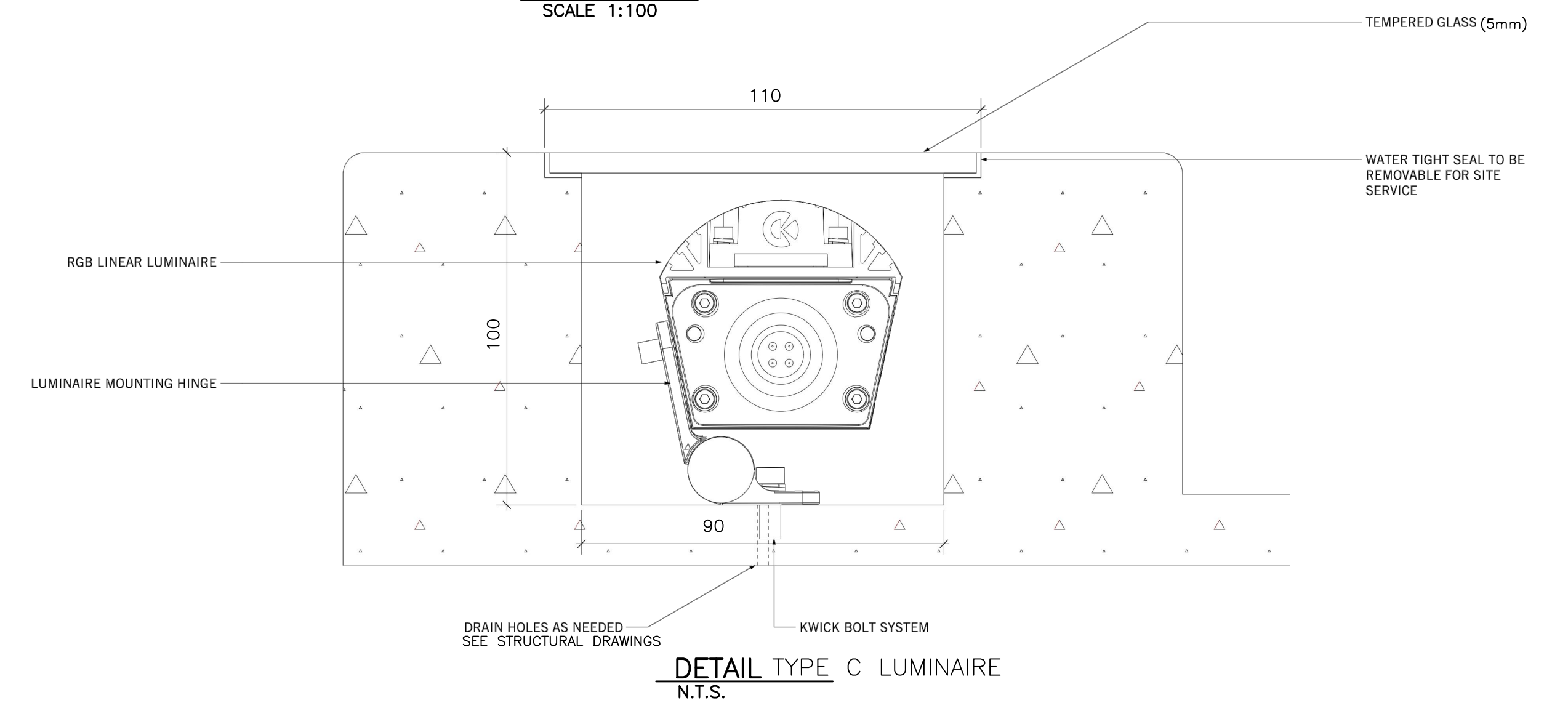


SINGLE LINE DIAGRAM
N.T.S.

PANEL 'A' SCHEDULE - DETAILS TO COME												
LOCATION: STAIRWAY LANDING				VOLTAGE: 120/240				PHASE: 1		WIRE: 3		
MOUNTING: PADMOUNT				BUS RATING: 100A								
INCOMING LUGS:				MAIN BREAKER: 100A								
MANUFACTURER:				FEEDER:								
CCT No.	DESCRIPTION	WATTAGE	BKR AMPS	BUS A	BUS B	BKR AMPS	WATTAGE	DESCRIPTION	CCT No.			
1	LIGHTING	450	15	A		15	500	ELEVATOR PIT RECEPTACLE (GFCI)	2			
3	LIGHTING	450	15		B		7500	ELEVATOR CONTROLLER	4			
5	LIGHTING	450	15	A		80			6			
7	ELEVATOR LIGHTING	200	15		B				8			
9	PANEL RECEPTACLE (GFCI)	500		A					10			
11	FIRE ALARM PANEL	500			B				12			
SUBTOTALS:		1400	1150				8000	7500				
NOTES:												
1. GFCI - GROUND FAULT CIRCUIT INTERRUPTER RECEPTACLE										PHASE A TOTAL -	9400	W
2.										PHASE B TOTAL -	8650	W
3.										PANEL LOAD TOTAL -	18050	W

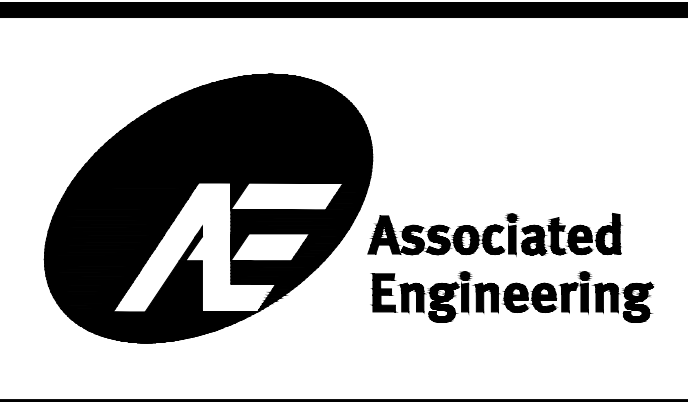


ELEVATION
SCALE 1:100



P:\010\29297\00_4th St Ped Overpass\Drawings\Electrical\2297-602.dwg
DATE: 2013/07/26, Teresa Grgic

NO.	DATE	ENG.	BY	SUBJECT
1	2013/07/26	DF	TG	ISSUED FOR ADDENDUM 3
0	2013/06/21	DF	TG	ISSUED FOR TENDER
REVISIONS				



PROJECT No.	20132297
SCALE	AS SHOWN
DRAWN	
DESIGNED	TERESA GRGIC

CITY OF NEW WESTMINSTER
ELECTRICAL SCHEDULES AND DETAILS

4TH STREET PEDESTRIAN OVERPASS		
DRAWING NUMBER	REV. NO.	SHEET
2297-602	1	2/2