

Best Management Practices for Builders and Developers



The City of New Westminster adopted the Erosion & Sediment Control (ESC) Bylaw in 2016 to protect drainage systems - such as watercourses and storm drains - from the discharge of mud and silt from construction and land development activities.

Keeping your site clean will minimize the need for post-construction clean up of streets, sidewalks, driveways and other paved surfaces, and avoid associated costs.

You are required to implement these best management practices in order to meet the requirements of the bylaw.

Benefits from doing ESC best management practices:

- Protection of aquatic life
- Reduce costs and prevent delays
- Improve working conditions
- Less site maintenance and clean up
- Ease of access during wet weather
- Neighbouring property owner satisfaction

ESC Best Management Practices

1. If you have exposed soil or soil stockpiles you must cover them.

Cover soil stockpiles (fully) with secured plastic sheeting to protect them from wind and rain.



Soil can also be stabilized by applying vegetation or grass/wildflower seed.

2. Prevent sediment and sediment-laden water from going into municipal drains or watercourses.



Protect catch basins with an effective silt control device. Contact City staff to install.

3. Sweep road surfaces regularly.
Hand or mechanical sweeping can mitigate risk of “first flush” sediment washing into municipal storm sewers or watercourses after a rain event.



**KEEP YOUR
SOIL ON THE
JOB SITE!**

4. Contain sediment on your site, don't track soil on the road or other paved surfaces.

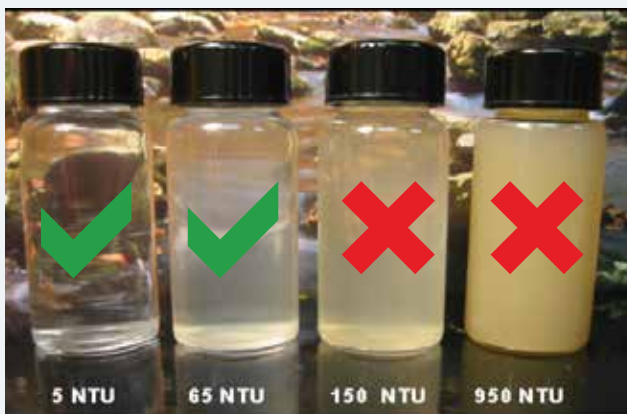
Use gravel or broken concrete to make an access pad.



5. Install gutters and downspouts or a temporary poly sock as soon as possible after the roof is laid to direct water into perimeter drainage.



6. Apply perimeter control measures, such as silt fencing, to trap sediment and slow down water flow.



The City of New Westminster allows no more than 75 mg/litre Total Suspended Solids (TSS) to meet requirements. Typically an NTU equal or less than 65 will meet City requirements.

NTU = Nephelometric Turbidity Units.
NTU is correlated to TSS (Total Suspended Solids)

Diagram of Single Family Lot with ESC Facilities

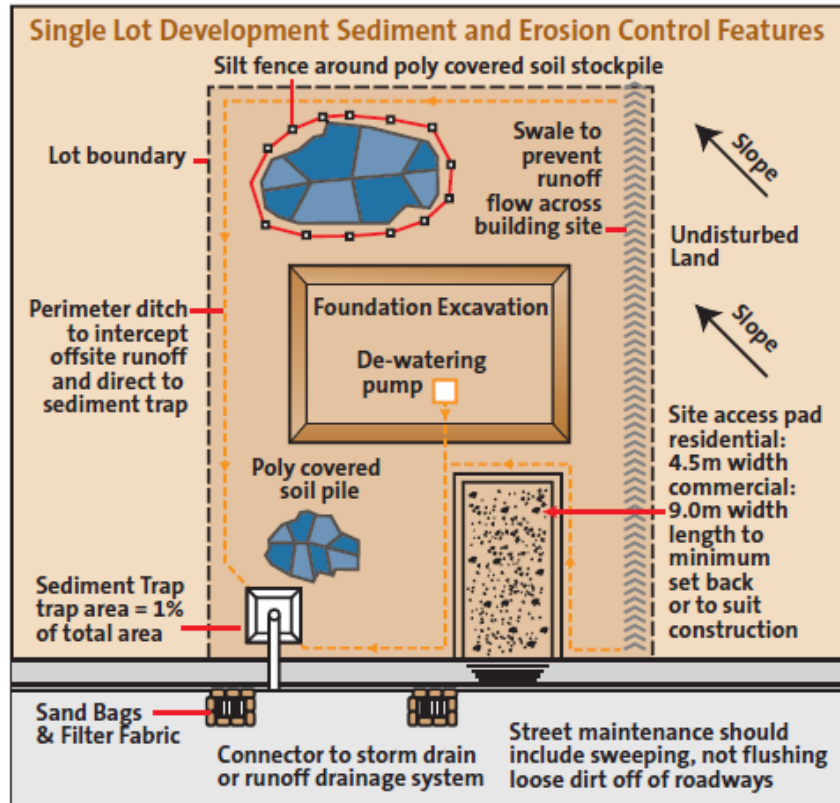


Diagram courtesy of the City of Coquitlam

Using concrete?

Collect concrete wash-water and dispose of it appropriately. Concrete must not be discharged into the drainage system or washed onto city streets.



Further Information

For more information, please contact the City of New Westminster Engineering Department at 604-527-4592.

For more information on ESC best management practices, please visit the Department of Fisheries and Oceans (DFO) Land Development Guidelines for the Protection of Aquatic Habitat www.dfo-mpo.gc.ca/Library/165353.pdf