

Beets

PLANT IN MID TO
LATE AUGUST

TRY CYLINDRA OR
BULL'S BLOOD
VARIETIES

PLANT 1/2" DEEP, 2-
4" APART. ROWS
SHOULD BE 12-18"
APART

IF VERY COLD IN
WINTER, COVER
WITH STRAW
MULCH FOR
PROTECTION AND
BURLAP

FALL HARVEST



Radish

PLANT LATE AUGUST

TRY EASTER EGG OR
BLACK SPANISH
VARIETIES

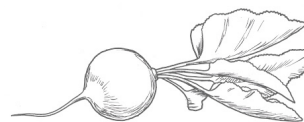
PLANT 1/4" DEEP, 25
SEEDS PER 12", ROWS
SHOULD BE 12-18"
APART

SOW SHORT ROWS,
KEEP WATERED AND
FERTILIZED, AND
THIN CAREFULLY

COVER OVER WINTER

FALL HARVEST

LEAVES AND SEED
PODS ARE ALSO
EDIBLE



Carrots

PLANT FIRST TWO
WEEKS OF AUGUST

TRY DANVERS
VARIETY

WATER SOIL DEEPLY
BEFORE PLANTING

BURY 1/4" DEEP IN
WATERED SOIL, 4
SEEDS PER 1"

WHEN TOPS DIE IN
NOVEMBER, COVER
AND PROTECT WITH
STRAW MULCH AND
BURLAP

WINTER HARVEST



Turnip

PLANT LATE AUGUST

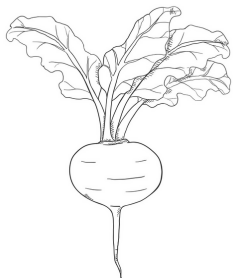
TRY PURPLE TOP
VARIETY

PLANT POINTED END
UP, 1/4-1/2" DEEP
AND 4-6" APART.
ROWS SHOULD BE 18-
24" APART

THIN AND FERTILIZE

USE CLOCHE FOR
COLD WEATHER,
USUALLY BY
OCTOBER

HARVEST WHEN 2 -
4" ACROSS



Swiss Chard

PLANT FIRST TWO
WEEKS OF AUGUST

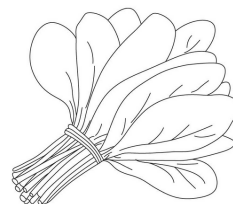
TRY RHUBARB OR
FORDHOOK GIANT
VARIETIES

PLANT 1/2" DEEP, 4-
12" APART. ROWS
SHOULD BE 18" APART

FERTILIZATION AND
THINNING IS
IMPORTANT

USE CLOCHE FOR
COLD WEATHER,
USUALLY BY
OCTOBER

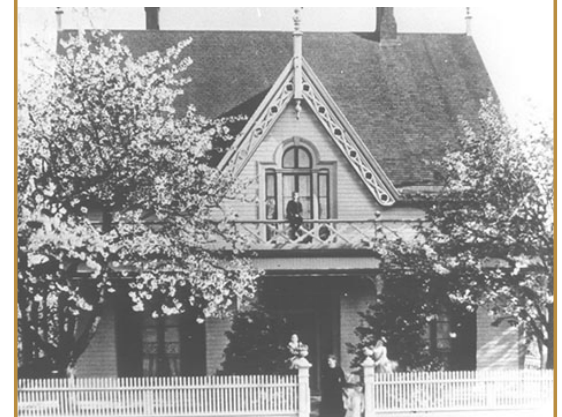
FALL AND WINTER
HARVEST



Heritage Garden Guide

INSPIRED BY THE
IRVING HOUSE
GARDEN, THIS
GUIDE FEATURES
HEIRLOOM
VEGETABLES FROM
VICTORIAN AND
EDWARDIAN TIMES

ALL VEGETABLES
CAN BE PLANTED
FROM SEED IN A
GARDEN BED, OR
ON A PATIO



IRVING HOUSE CA. 1880. NWPL COLLECTION ITEM 254.