

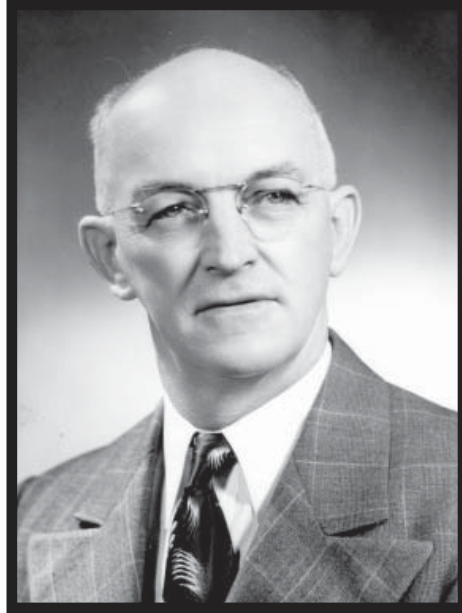
MOTT CRESCENT TRIANGLE



Established	1958
Size	0.54 acres
location	East Eighth Avenue & Sangster Place
Ammenities	
	<ul style="list-style-type: none">• Grass & trees• Passive play area

After the city developed the new residential subdivision of Massey Heights, it turned over this small park site to the Parks Commission. The Commission landscaped the triangle in 1958, and named it after one of the City's former mayors.

Behind the Name...Mott Crescent Triangle:



ITP7515

William Malcolm Mott

Born: 1894

Died: November 26, 1961

William Malcolm Mott was a native of Dartmouth, Nova Scotia and a veteran of World War I. He arrived in New Westminster in 1928 and founded Mott Electric Ltd. here.

Mott was a city councillor for six years before being elected Mayor, a post he held from 1942 to 1948. He was subsequently elected New Westminster's Liberal Member of Parliament, serving from 1949 to 1953.

Mott was also active in sporting circles, and was immensely proud of his role, with another local sport supporter Oscar Swanson, to spearhead the conversion of Queen's Park Arena to skating and hockey. He formed several minor hockey teams, often at a considerable personal expense and personally coached hundreds of children at the arena over the years.