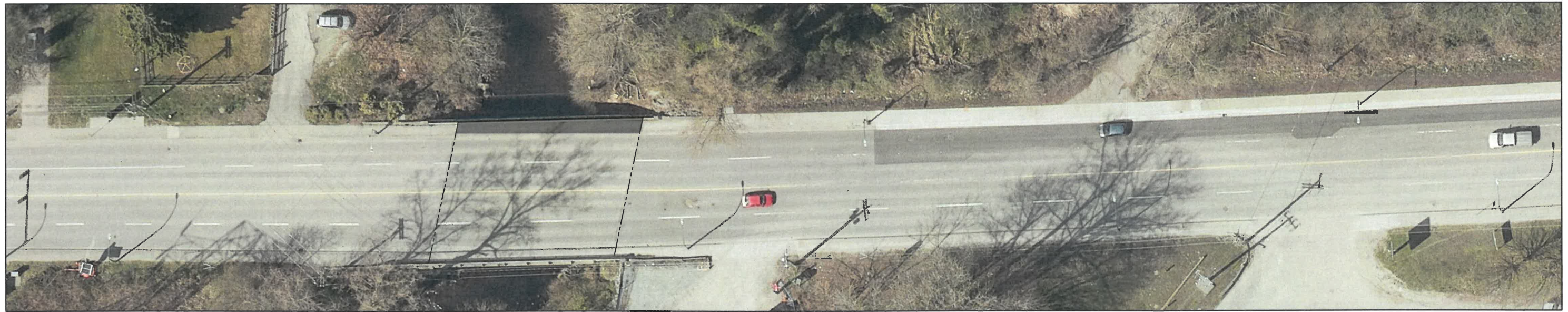


DRAWING INDEX

SHEET	DRAWING NAME	REVISION	DRAWING TITLE
1	2240-00-S-100	0	DRAWING INDEX AND COVER SHEET
2	2240-00-S-101	0	SIDEWALK REPAIR DETAILS

CITY OF NEW WESTMINSTER NORTH ROAD BRIDGE SIDEWALK WIDENING



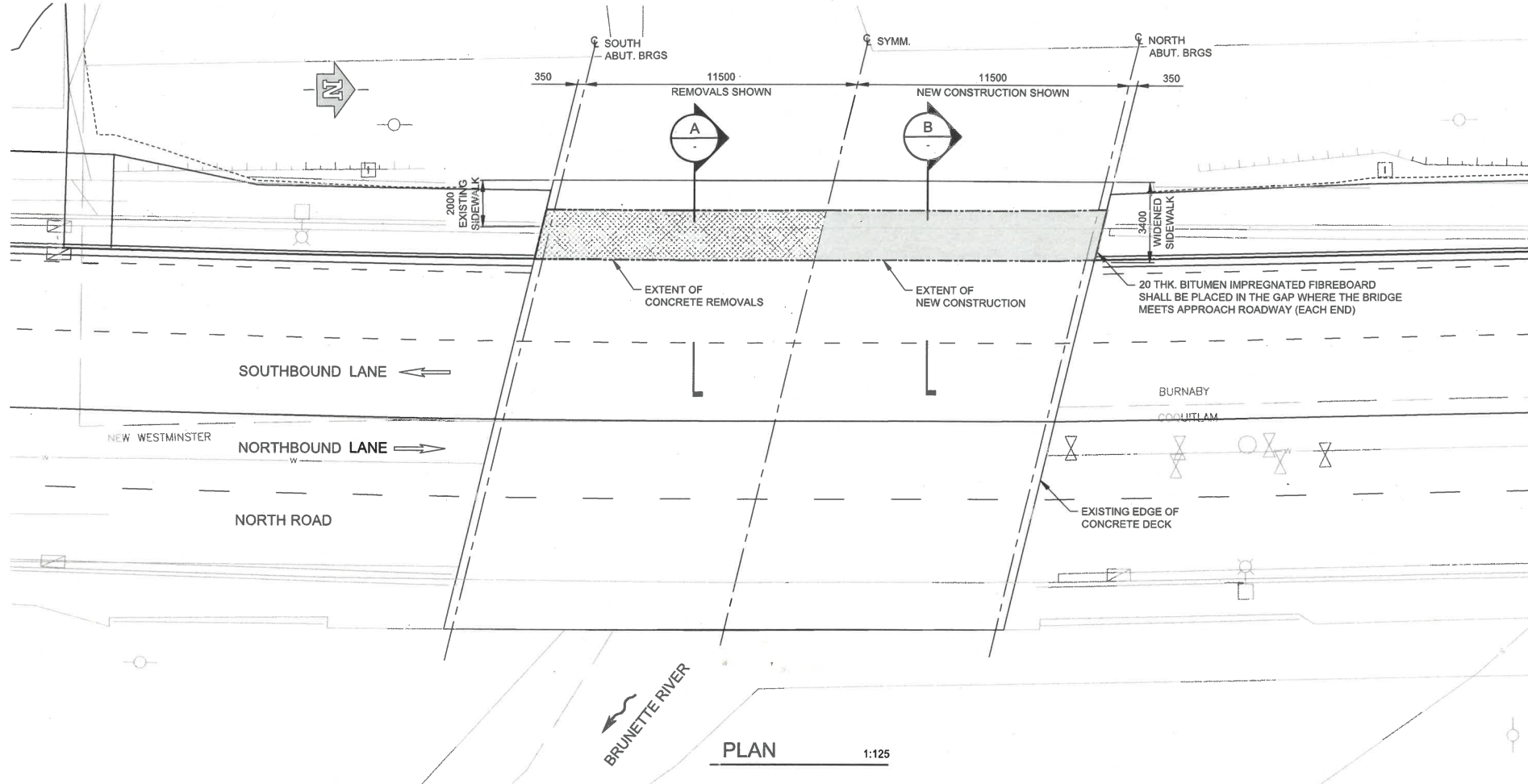
PLOT DATE: 8/22/2022 3:45:57 PM
SAVE DATE: 8/22/2022 3:45:57 PM
DWG PATH: c:\2021-2240-00_standards\2240-00-s-100.dwg



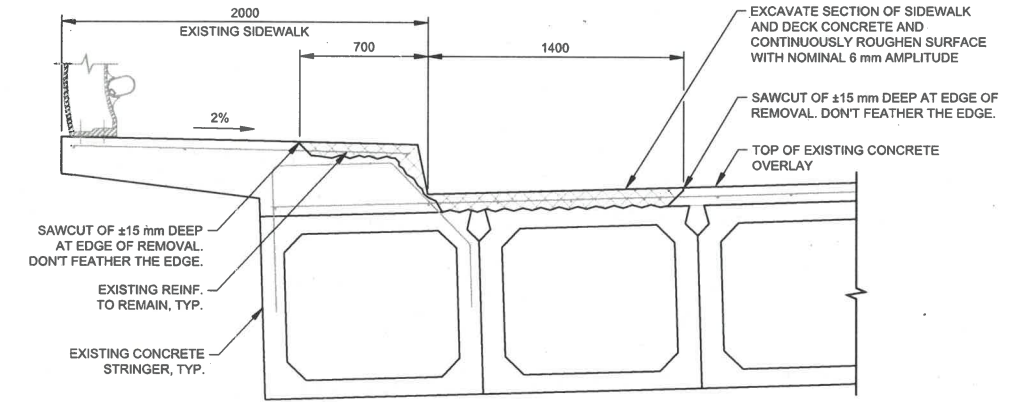
NORTH ROAD BRIDGE
SIDEWALK WIDENING
2021-2240-00

REV	DATE	DESIGN	DRAWN	DESCRIPTION
0	2022AUG22	M. IP	J. MORO	ISSUED FOR TENDER

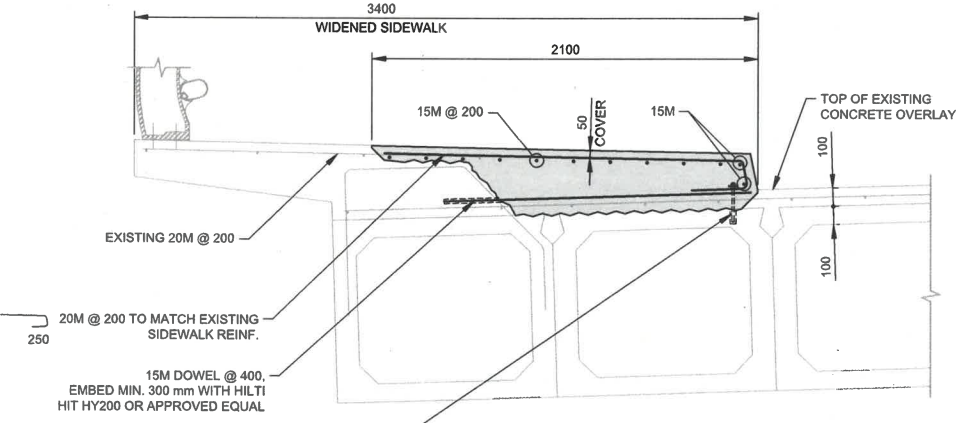
DRAWING	REVISION	SHEET
2240-00-S-100	0	



PLAN 1:125



A SECTION 1:20 CONCRETE REMOVALS



B SECTION 1:20 NEW CONSTRUCTION

GENERAL NOTES:

1. GENERAL
 - 1.1. THESE DRAWINGS SHALL BE READ IN CONJUNCTION WITH THE CONTRACT SPECIFICATIONS.
 - 1.2. DESIGN CODE: CAN/CSA S6-19 "CANADIAN HIGHWAY BRIDGE DESIGN CODE" (CHBDC).
 - 1.3. ALL DIMENSIONS ARE IN MILLIMETERS UNLESS OTHERWISE NOTED.
 - 1.4. ALL DIMENSIONS SHOWN FOR THE EXISTING CONDITIONS AND COMPONENTS HAVE BEEN TAKEN FROM RECORD DRAWINGS AND TO BE CONFIRMED ON SITE BY THE CONTRACTOR PRIOR TO FABRICATION OR CONSTRUCTION.
 - 1.5. THE CONTRACTOR SHALL VERIFY ALL NECESSARY DIMENSIONS IN THE FIELD PRIOR TO ORDERING AFFECTED MATERIAL, PRODUCING SHOP OR TEMPORARY WORKS DRAWINGS OR FABRICATING AFFECTED COMPONENTS. CONTRACTOR SHALL NOTIFY THE CONTRACT ADMINISTRATOR WHEN SITE CONDITIONS OR DIMENSIONS REQUIRE CHANGES TO THE DESIGN OR MATERIALS.
 - 1.6. CONSTRUCTION STAGES AND LOADS ARE THE RESPONSIBILITY OF THE CONTRACTOR.

MATERIALS:

2. CONCRETE
 - 2.1. PORTLAND CEMENT SHALL CONFORM TO THE REQUIREMENTS OF CAN/CSA-A5, TYPE GU, FLY ASH SHALL CONFORM TO CAN/CSA-A23.5, TYPE F.
 - 2.2. CONCRETE SHALL CONFORM TO CAN/CSA A-23.1 AND SHALL HAVE A MINIMUM 28 DAYS COMPRESSIVE STRENGTH, EXPOSURE CLASS AND WATER/CEMENT RATIO AS FOLLOWS:

CONCRETE ELEMENT	EXPOSURE CLASS	28 DAYS STRENGTH	MAX. WATER / CEMENT RATIO	NOMINAL AGGREGATE SIZE	SUPPLEMENTARY CEMENTING MATERIALS (a)
DECK	C1	35 MPa	0.38	20 mm	FLY ASH 20% MAX.

- (a) PERCENTAGE BY MASS OF CEMENTING MATERIALS.
- 2.3. MINIMUM CONCRETE COVER TO REINFORCEMENT TO BE 50 mm, UNLESS NOTED OTHERWISE.
 - 2.4. CHAMFER ALL EXPOSED CONCRETE EDGES 20 mm, UNLESS NOTED OTHERWISE.
 - 2.5. ALL EXISTING CONCRETE SURFACES TO RECEIVE NEW CONCRETE SHALL BE PREPARED IN ACCORDANCE WITH SPECIFICATIONS. CONCRETE SURFACES AND CONSTRUCTION JOINTS SHALL BE WET ABRASIVE BLAST CLEANED TO SOUND CONCRETE AND CONTINUOUSLY ROUGHENED TO A MINIMUM AMPLITUDE OF 6 mm.
 - 2.6. CONCRETE REMOVAL AT THE SIDEWALK SHALL BE LIMITED TO A MINIMUM DEPTH OF 25 mm BELOW EXISTING REINFORCEMENT. CONCRETE REMOVAL AT THE DECK SHALL BE LIMITED TO THE TOP SURFACE OF THE BOX BEAM BUT NOT BELOW. NO EXISTING REINFORCEMENT SHALL BE CUT UNLESS NOTED OTHERWISE ON THE DRAWINGS OR APPROVED BY THE CONTRACT ADMINISTRATOR.

3. REINFORCING STEEL
 - 3.1. ALL REINFORCING STEEL TO CONFORM TO CSA G30.18M, GRADE 400R, UNLESS NOTED OTHERWISE.
 - 3.2. REINFORCING SHALL NOT BE WELDED.
 - 3.3. EXISTING REINFORCEMENT SHALL NOT BE REMOVED OR DAMAGED AS A RESULT OF CONCRETE DEMOLITION. CONTRACTOR IS RESPONSIBLE TO REPLACE REINFORCING DAMAGED BY THE REMOVAL OPERATION TO THE SATISFACTION OF THE CONTRACT ADMINISTRATOR.
 - 3.4. LAPS SHALL BE STAGGERED SUCH THAT NOT MORE THAN ONE-HALF OF THE BARS ARE SPLICED AT ANY LOCATION.

BAR SIZE	MINIMUM LAP LENGTH (mm)	
	BOTTOM BAR	TOP BAR*
15M	510	660
20M	620	800

* HORIZONTAL BAR WITH MORE THAN 300 CONCRETE BELOW.

- 3.5. DOWEL ADHESIVE SHALL BE HILTI HIT-HY 200. INSTALL IN ACCORDANCE WITH MANUFACTURER'S INSTRUCTIONS.

PLOT DATE: 8/22/2022 4:10:54 PM
 SAVE DATE: 8/22/2022 4:10:54 PM SAVED BY: MOROJ
 DWG PATH: s:\2021-2240-01\structural\2240-01-s-101.dwg



PERMIT TO PRACTICE
 ASSOCIATED ENGINEERING (B.C.) LTD.
 PERMIT NUMBER: 1000163
 Engineers & Geoscientists BC



REV	DATE	DESIGN	DRAWN	DESCRIPTION
0	2022AUG22	M. IP	J. MORO	ISSUED FOR TENDER

CITY OF NEW WESTMINSTER

NORTH ROAD BRIDGE
 SIDEWALK WIDENING

2021-2240-00

SCALE: AS SHOWN



NEW WESTMINSTER
 STRUCTURAL

SIDEWALK REPAIR DETAILS

DRAWING	REVISION	SHEET
2240-00-S-101	0	