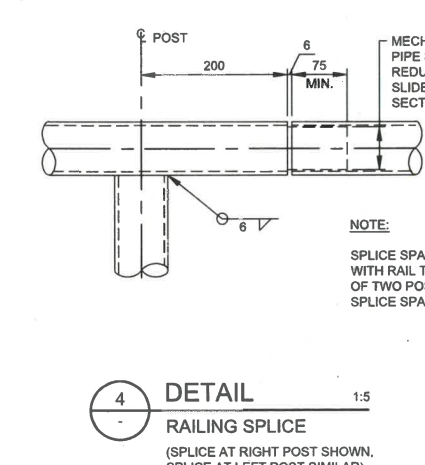
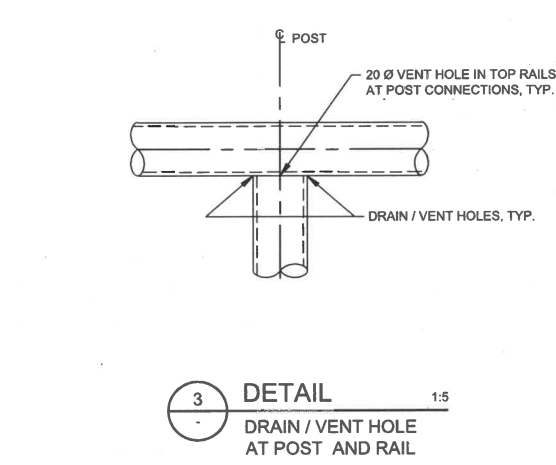
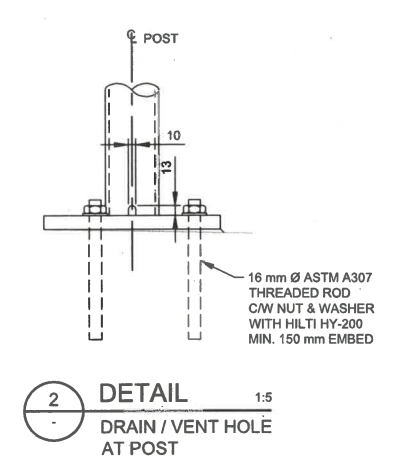
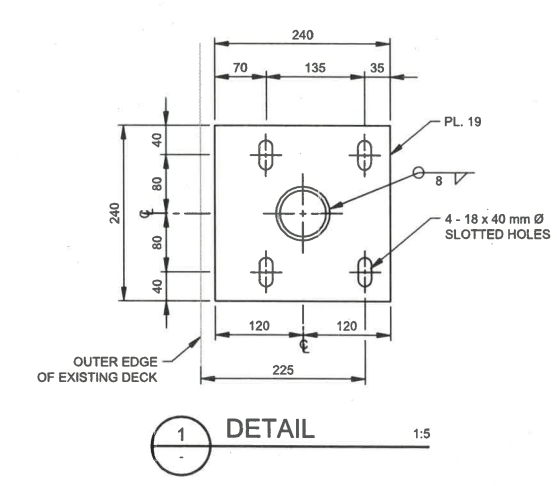
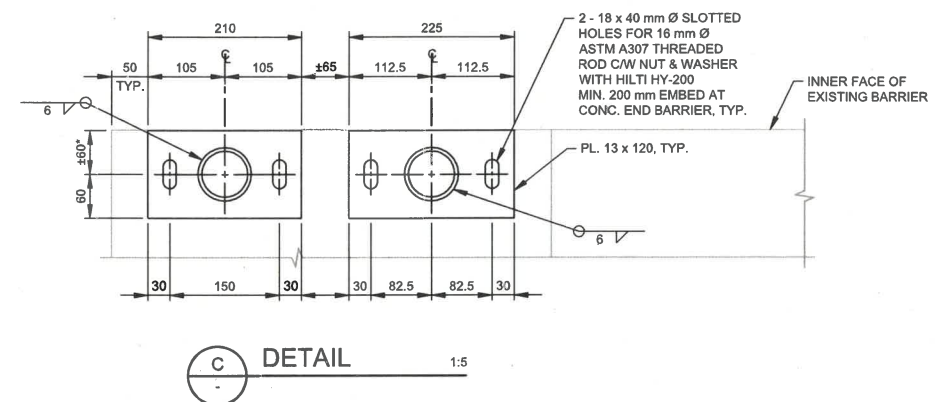
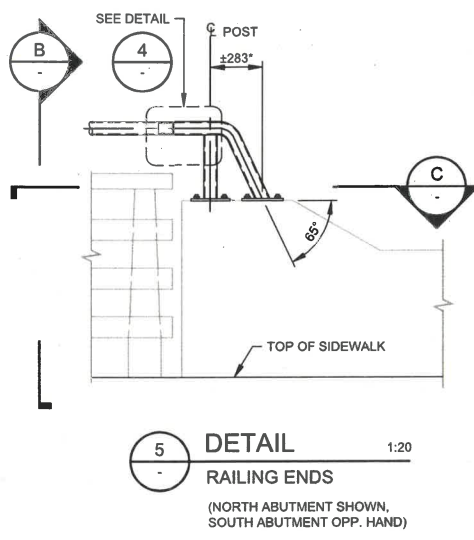
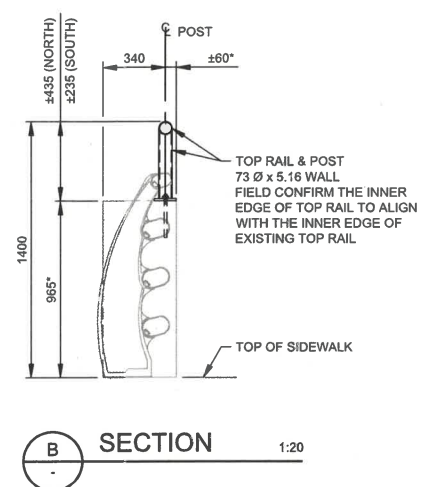
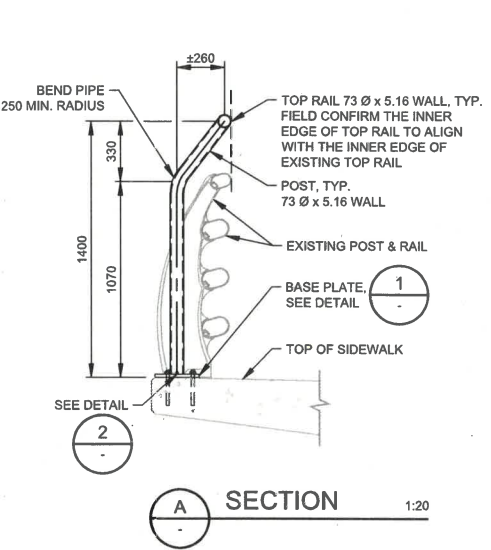


- NOTES:**
- SEE GENERAL NOTES ON DWG. 2240-00-S-101.
 - ALL RAIL AND POSTS TO BE STANDARD STEEL PIPE, ASTM A53 GRADE A OR B (Fy = 240 MPa). MISCELLANEOUS PLATE TO BE CAN/SCSA G40.21 GRADE 300W.
 - ALL ROUGH EDGES SHALL BE GROUND SMOOTH AND WELD SPLATTER SHALL BE REMOVED.
 - WELDED FENCE SHALL BE GALVANIZED AFTER FABRICATION IN ACCORDANCE WITH ASTM A123/A123M.
 - FIELD WELDING SHALL BE KEPT TO A MINIMUM. DAMAGED GALVANIZING SHALL BE REPAIRED WITH TWO HEAVY COATS OF ZINGA OF APPROVED ALTERNATE.
 - VENT AND DRAIN HOLES:
 - RAILS SHALL BE PROVIDED WITH A BOTTOM DRAIN/VENT HOLE AT BOTH ENDS BETWEEN POSTS.
 - WHERE A POST IS EMBEDDED IN CONCRETE WITH A SLOPED TOP SURFACE OR WHERE IT IS SUPPORTED ON A SLOPE BASE PLATE, THE DRAIN/VENT HOLE NEAR THE BOTTOM OF THE POST SHALL BE LOCATED ON THE LOWER SIDE OF SLOPE.
 - POST ANCHORS SHALL BE ASTM A307 THREADED ROD, GALVANIZED TO THE REQUIREMENTS OF ASTM A153/A153M.
 - ACCEPTABLE ADHESIVES FOR BONDING THE ANCHORS INTO CONCRETE INCLUDE HILTI HIT HY-200 OR APPROVED ALTERNATE.
 - ANCHORS SHALL BE INSTALLED IN ACCORDANCE WITH THE ADHESIVE MANUFACTURERS INSTRUCTIONS.
 - HOLES IN CONCRETE FOR ANCHORS MUST BE DRILLED WITH A HAMMER DRILL AND A CARBIDE TIPPED BIT. CONCRETE IN HOLES MUST BE WATER-SATURATED OR DRY WHEN INSTALLING ANCHORS.

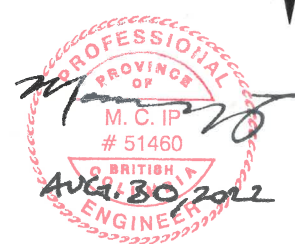


NOTE:
SPLICE SPACING TO BE APPROX. 7 TO 9 METRES, WITH RAIL TO BE CONTINUOUS OVER A MINIMUM OF TWO POSTS. CONTRACTOR TO CONFIRM SPLICE SPACING.

PLOT DATE: 8/30/2022 4:35:36 PM
SAVE DATE: 8/30/2022 4:35:36 PM SAVED BY: MOROJ
DWG PATH: q:\2021-2240-00\struc\2240-00-s-102.dwg



PERMIT TO PRACTICE
ASSOCIATED ENGINEERING (B.C.) LTD.
PERMIT NUMBER: 1000163
Engineers & Geoscientists BC



REV	DATE	DESIGN	DRAWN	DESCRIPTION
0	2022AUG30	M. IP	J. MORO	ISSUED FOR TENDER

CITY OF NEW WESTMINSTER

NORTH ROAD BRIDGE
SIDEWALK WIDENING

2021-2240-00
SCALE: AS SHOWN



NEW WESTMINSTER
STRUCTURAL

ADDITIONAL POST AND RAILING DETAILS

DRAWING	REVISION	SHEET
2240-00-S-102	0	