



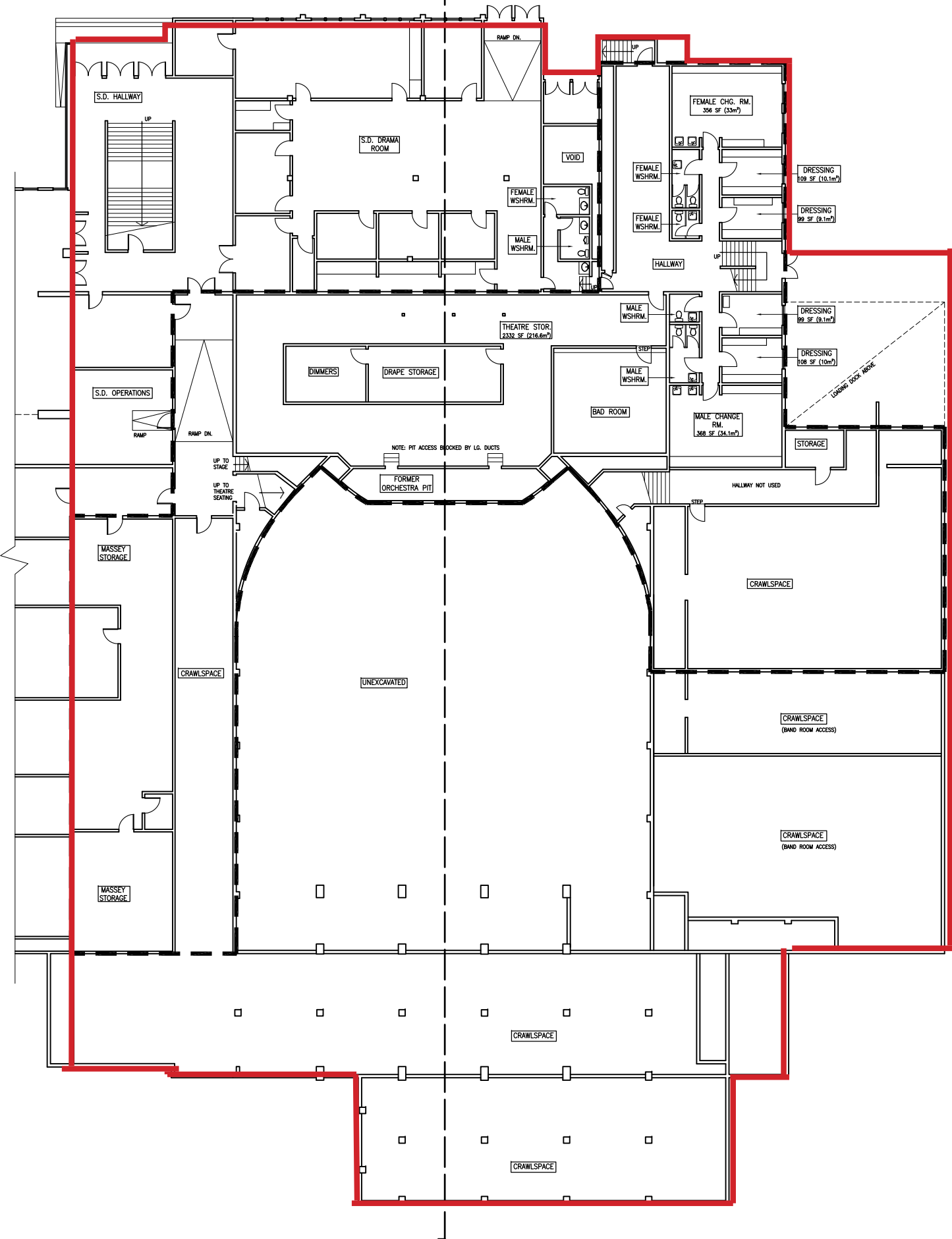
Corporation of the City of  
**NEW WESTMINSTER**

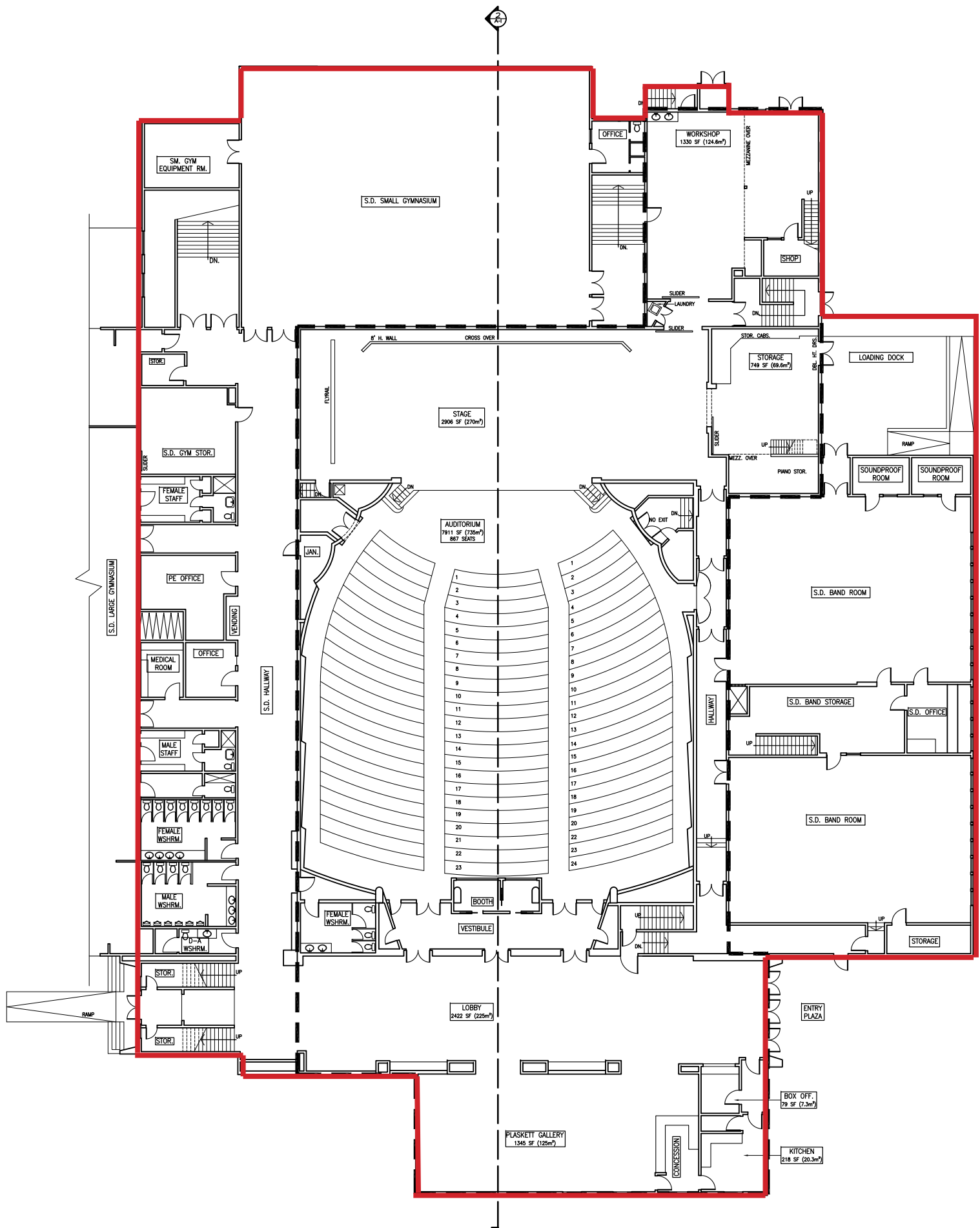
**NWRFP-22-12**

**APPENDIX C**

**OCTOBER 2021 MASSEY THEATRE LEASE SPACE DRAWINGS**







SM. GYM  
EQUIPMENT RM.

S.D. SMALL GYMNASIUM

OFFICE

WORKSHOP  
1330 SF (124.6m²)

SHOP

STOR.

S.D. GYM STOR.

FEMALE  
STAFF

PE OFFICE

MEDICAL  
ROOM

OFFICE

MALE  
STAFF

FEMALE  
WSHRM.

MALE  
WSHRM.

W-D-A  
WSHRM.

STOR.

STOR.

STAGE  
2906 SF (270m²)

AUDITORIUM  
7911 SF (735m²)  
877 SEATS

1

2

3

4

5

6

7

8

9

10

11

12

13

14

15

16

17

18

19

20

21

22

23

24

BOOTH

VESTIBULE

EVN. WALL

8' H. WALL

CROSS OVER

STOR. CAB.

STORAGE  
749 SF (69.6m²)

LOADING DOCK

MEZZ. OVER

PANO STOR.

SOUNDPROOF ROOM

SOUNDPROOF ROOM

S.D. BAND ROOM

S.D. BAND STORAGE

S.D. OFFICE

S.D. BAND ROOM

STORAGE

LOBBY  
2422 SF (225m²)

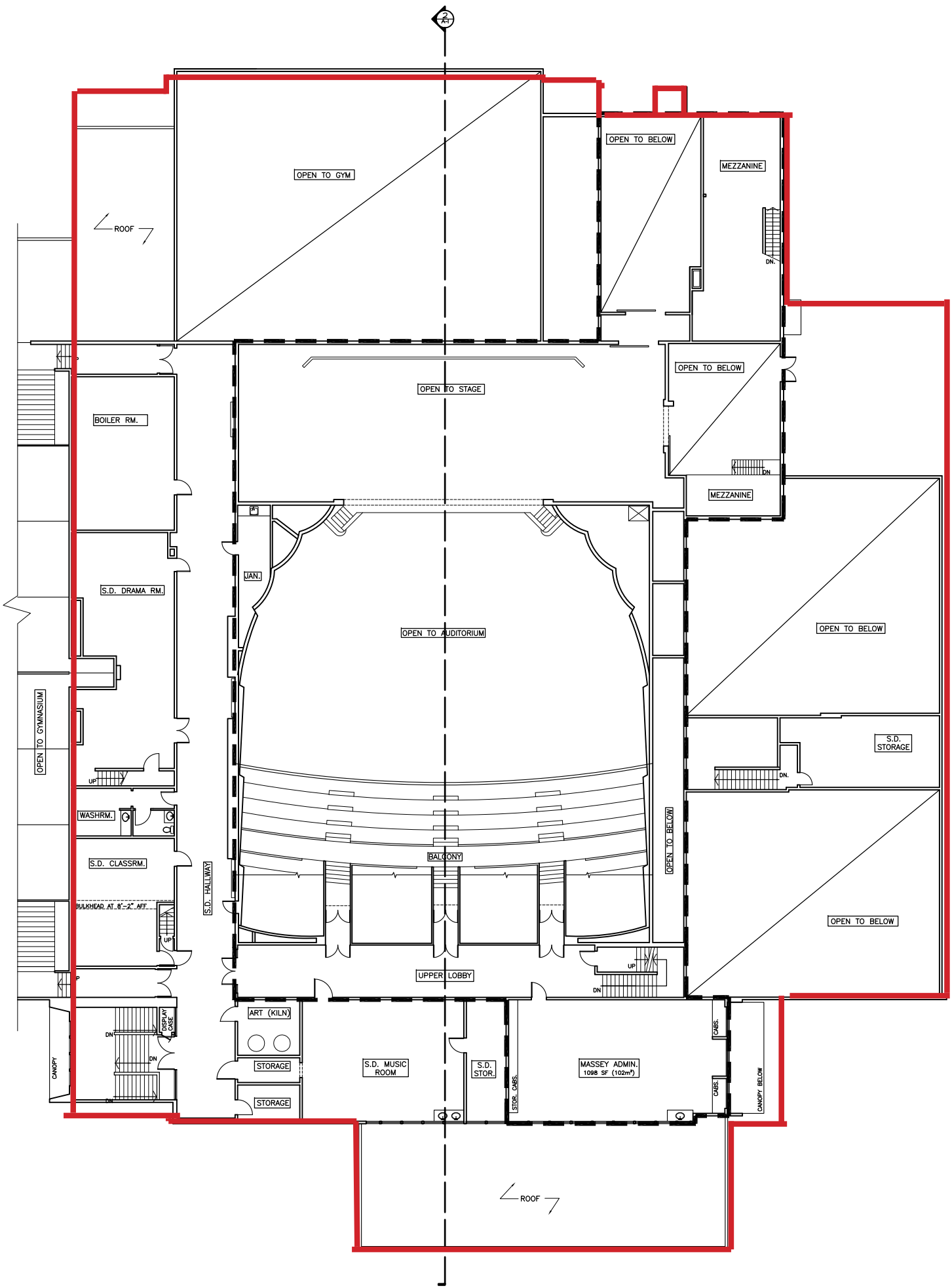
PLASKETT GALLERY  
1345 SF (125m²)

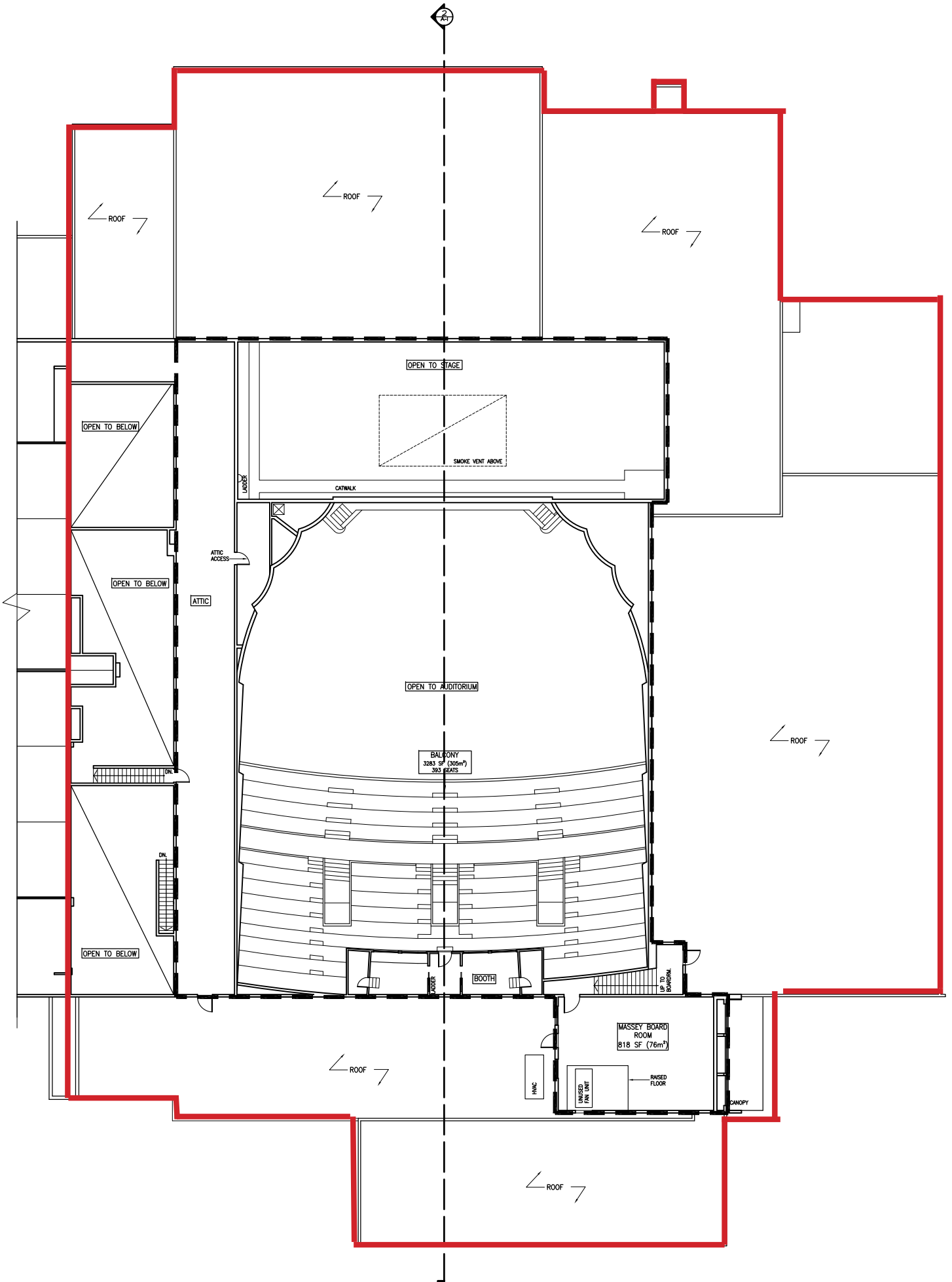
CONCESSION

BOX OFF.  
79 SF (7.3m²)

KITCHEN  
218 SF (20.3m²)

ENTRY PLAZA





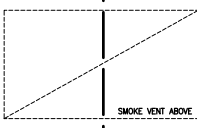
ROOF

ROOF

ROOF

OPEN TO BELOW

OPEN TO STAGE



SMOKE VENT ABOVE

LADDER

CATWALK

ATTIC ACCESS

ATTIC

OPEN TO BELOW

OPEN TO AUDITORIUM

BALCONY  
3283 SF (306m<sup>2</sup>)  
383 SEATS

ROOF

OPEN TO BELOW

LADDER

BOOTH

UP TO BOARDROOM

ROOF

MASSEY BOARD ROOM  
818 SF (76m<sup>2</sup>)

HVAC

RAISED FLOOR

CANOPY

ROOF

