

EWEN AVE.

EWEN AVE.

NEW MUNICIPAL WATER CONNECTION: New "wet tap" water connection required. Coordinate with CWV Engineering Department. Refer to Water Valve Chamber Schematic Detail this sheet. The Contractor shall be also responsible to Supply Isolation Valves (sized to suit) and all fittings necessary to connect New Water Supply Lines from this location to New Drinking Fountain Children's Play Area. Stream Course as Detailed. Mark exact location of new water supply lines on "As-Built". Bury at min. 450mm deep and had pipe in approved Backing Sand. REFER ALSO TO DRINKING FOUNTAIN DETAIL THIS SHEET AND TO STREAM COURSE SUPPLY DETAILS.

WATER VALVE CHAMBER See Enlarged Detail this Sheet

IRRIGATION SYSTEM STUB-WATER SUPPLY 3" COPPER CONNECTION POINT TO BE PROVIDED BY CWV ENGINEERING DEPARTMENT. "WET TAP" ALL WORK FROM THIS POINT "downstream" IS INCLUDED IN CONTRACT TO PROVIDE FULLY OPERABLE SYSTEM.

Kiosk Mounted Irrigation Control Cabinet: Location of Irrigation Controller - not necessarily as shown. Coordinate on site at time of installation w/ CNV PARKS STAFF. INSIDE NEW ELECTRICAL KIOSK. Provide for complete installation "downline of power feed" and include supply and installation inside weatherproof vandal-proof lockable metal control cabinet-REFER TO ELECTRICAL DWGS. BY DMD ASSOCIATES FOR COORDINATED POWER SUPPLY POINT.



Dimensional Data (inches and mill) is Subject to Manufacturing Tolerances and Change Without Notice

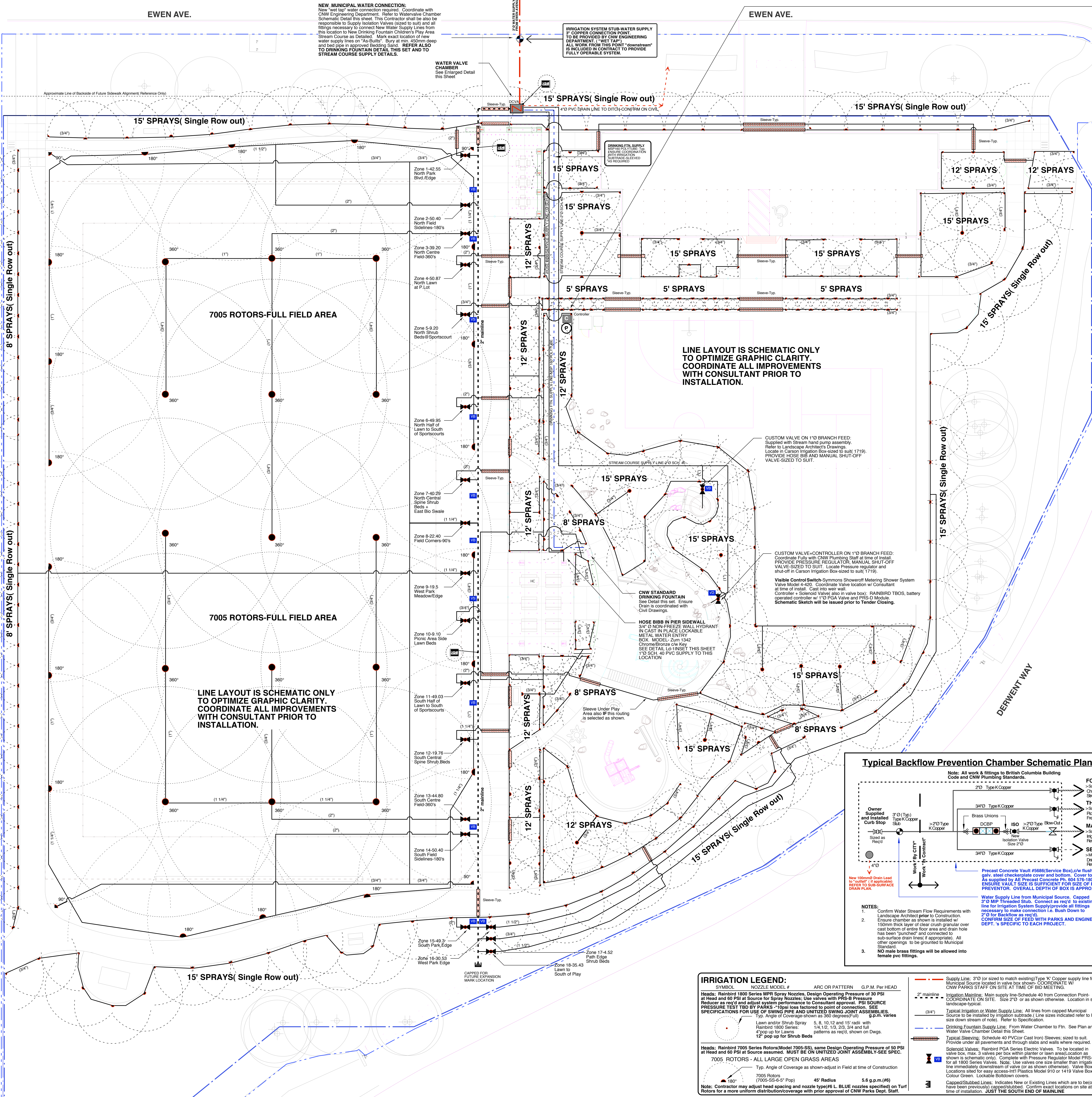
Z1342 Wall Faucet TAG

PWL partnership logo and contact information for PWL Partnership, including address and phone number.

Richard Flaherty Landscape Architect Inc. logo and contact information, including address and phone number.

REVISIONS AND ISSUES table with columns for NO., DATE, and DESCRIPTION. Includes revisions for 65% CITY REVIEW, 90% CITY REVIEW, and 2010/08/28 ISSUED FOR TENDER.

NOT FOR CONSTRUCTION



Engineering Specification table for Z1342 Encased anti-siphon wall faucet, listing inlet connection, inlet description, and approx. max. length.

Options (check/appropriate options) and Suffixes (check/appropriate options) for the wall faucet.

Item supplied locally by Andrew Sheret, Vancouver, BC. Includes logos for various suppliers like Rainbird and HunterDouglas.

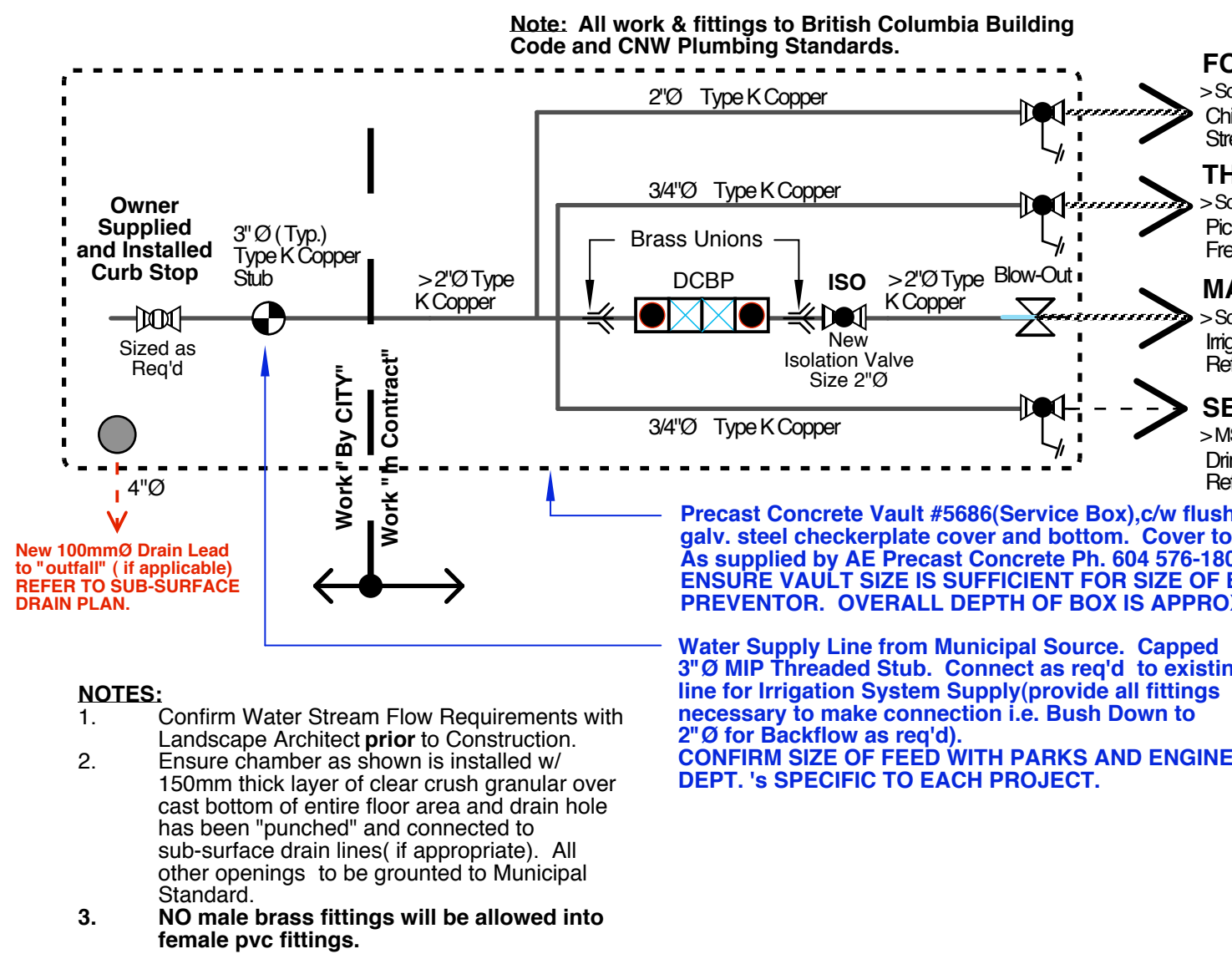
JURULIGHT COMMERCIAL PLUMBING PRODUCTS x 348 South West Street x Fallouon, NY 14733. Includes contact information for the supplier.

Frost Free Water Hydrant Scale: NTS. Includes a small schematic of the hydrant.

Irrigation System Zone Chart table with columns for Zone Number, Landscape Location, Total GPM, and Max. Line/Valve Size.

- CNV PARKS DEPT. STANDARD IRRIGATION SYSTEM NOTES: 1. All items as specified or pre-approved equals. 2. Coordinate final head locations to ensure that all heads are off line of any field demarcation lines... 11. AS BUILT RECORD DRAWINGS: As-built sketches to be maintained on a daily basis by the on-site irrigation sub-trade...

Typical Backflow Prevention Chamber Schematic Plan



Schematic Legend

- Legend symbols for: Municipal Water Source/Point of Connection, DCBP = Double Check Backflow Preventor, Rainbird 330RC Quick Coupler/Bowlow Tee, ISO, New Isolation Valves to CNV Parks Standards, New Bronze Ball Valve to CNV Parks Standards, New 4" PVC Floor Drain-connect to Site Drainage.

IRRIGATION LEGEND:

- Legend symbols for: Supply Line, 2" mainline, Typical Irrigation Water Supply Line, Solenoid Valve, Drinking Fountain Supply Line, Typical Slewing, 7005 Rotors, 7005 Rotors (7005-SS-e-7-7-7) Pop up for Shrub Beds.

- Notes: 1. Confirm Water Stream Flow Requirements with Landscape Architect prior to Construction. 2. Ensure chamber as shown is installed w/ 150mm thick layer of clear crush granular over cast bottom of entire floor area and drain hole has been "bonded" and connected to sub-surface drain inlet (if appropriate). 3. NO male brass fittings will be allowed into female pvc fittings.

- Water Supply and Electrical Supply Points of Connection: Point of connection with Municipal Water Source and of stubbed location of 1"0 conduit for the line supply wiring. Provide all materials and labour necessary to connect with existing water line and to run voltage wiring back to the controller at location shown. Coordinate exact locations on site w/ CNV STAFF and w/ ELECTRICAL DWGS. Refer to Plans (Size indicated where known). Controller: Rainbird ES20-24MC Series Controller w/ locking plastic cabinet (2x stations). One Required (Spare Station to allow for Future Expansion). Power Requirement 120V A.C. Located inside of ELECTRICAL KIOSK. Exact location to be confirmed on site. Conduit and wiring to location shown, to be included in price and installed by Electrician to Code. Confirm location of power feed on ELECTRICAL DWGS. Quick Couplers/Bowlow Tees: Rainbird 330RC Series. Installed on mainline or as shown on Plans. Install all quick couplers in soft landscape/soil as shown with 100mm Plastic Model 910-12 Valve Boxes. SYSTEM BLOW-OUT: COUPLER LOCATED INSIDE NEW WATER VALVE CHAMBER BY THIS CONTRACTOR. STABLE TO WATER SERVICE FROM CITY. DCVA Backflow Prevention Device: INCLUDED IN WORK OF THIS SCOPE. REFER TO SPECIFICATION SECTION 02600. PROVIDE ALL FITTINGS TIG TO CONNECT WITH EXISTING WATER SERVICE FROM CITY SUPPLY POINT-SEE ALSO NOTE ON PLAN. (1 1/2" O SIZE). SEE WATER VALVE CHAMBER DETAIL THIS SHEET.

CLIENT: NEW WESTMINSTER PROJECT: QUEENSBOROUGH PARKS DERWENT AND EWEN NEIGHBOURHOOD PARK DRAWING TITLE: LANDSCAPE IRRIGATION & WATER SUPPLY PLAN

DRAWING TITLE: LANDSCAPE IRRIGATION & WATER SUPPLY PLAN PROJECT NO: 1049 DATE: JUNE 21, 2010 FILE NAME: 1049 PLAN IRRIGATION.vwx PLOTTED: 8/20/10 AT: 10:54:59 PM DRAWN: RF REVIEWED: BH

SCALE: 1:150

L4.01