

#### A Note About Neighbourhood Profiles

All data in tables, charts, and text is from Statistics Canada, based on the 2006 and 2001 Census. References in the text to “more”, “fewer”, or “similar” are all based on comparisons with Census figures for the City of New Westminster as a whole. For assistance, please contact the City of New Westminster Planning Division at 604.527.4532 or [plnpost@newwestcity.ca](mailto:plnpost@newwestcity.ca).

#### Distinct Neighbourhood Features

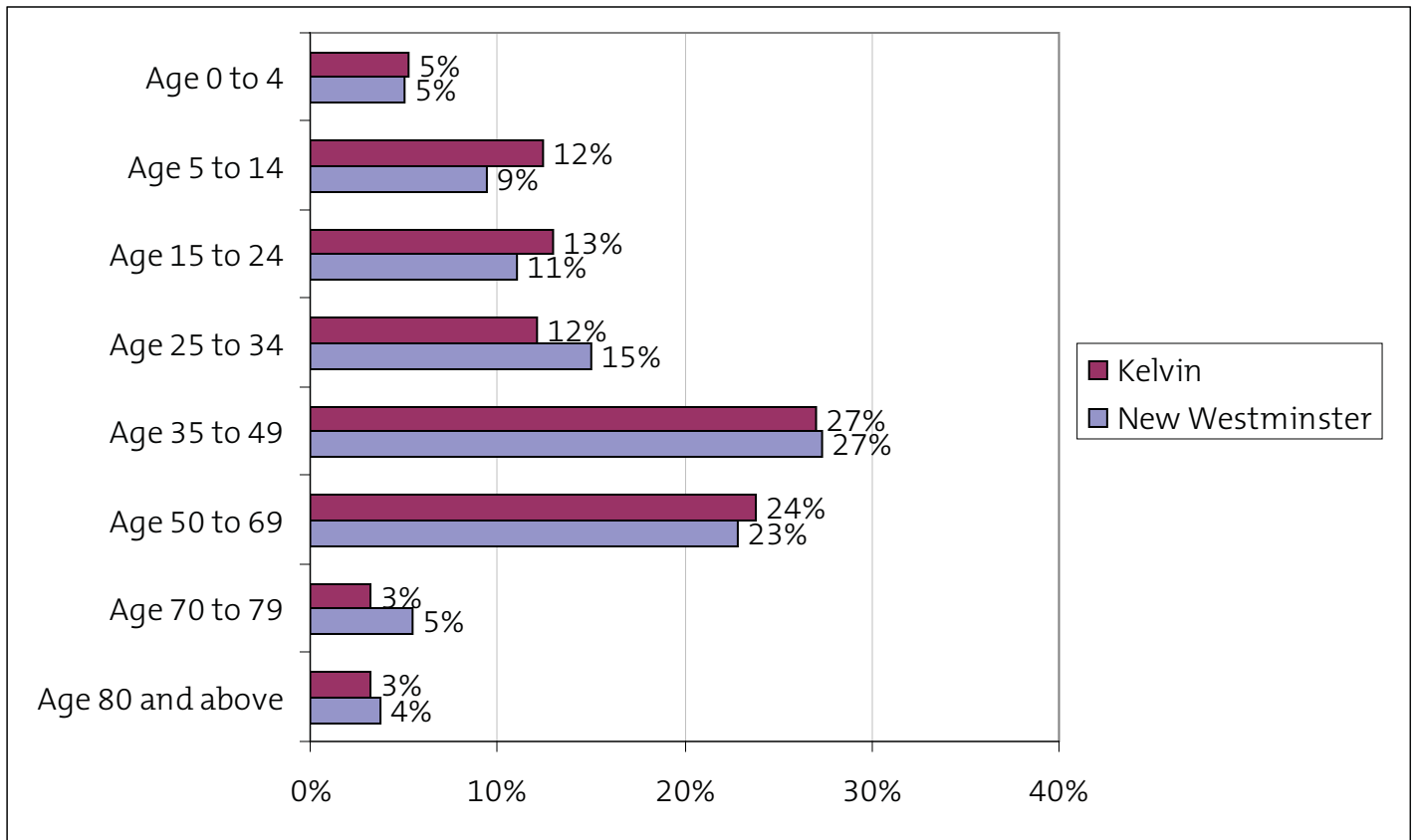
Unlike the City as a whole, Kelvin is not growing. Its population decreased very slightly between 2001 and 2006. It has more children and teens aged 5 to 14, and fewer young adults. More of its households consist of couples with children, and there are fewer persons living alone. Multiple-family households are more common here. Kelvin’s household income is 22% higher than the City’s. In Kelvin, the same proportion of households (36%) lives in either a single family home or an apartment. Fewer persons have a Bachelors degree and more are likely to have high school completion as their highest level of education. Filipino and Polish are more prominent ethnic origins. The Philippines is more prominent as a source country of both total immigrants and recent immigrants. India is also a more significant source country of immigrants in Kelvin. Recent immigrants are less likely to have settled in this neighbourhood. On many measures, Kelvin’s profile is very similar to the City’s. These include household mobility, housing tenure, mode of travel to work, share of immigrants, and home language.

#### Population & Age Groups

	New Westminster		Kelvin	
Total population	57,850		1,890	
Age 0 to 4	2,925	5.1%	100	5.3%
Age 5 to 14	5,480	9.5%	235	12.4%
Age 15 to 24	6,410	11.1%	245	13.0%
Age 25 to 34	8,700	15.0%	230	12.2%
Age 35 to 49	15,795	27.3%	510	27.0%
Age 50 to 69	13,215	22.8%	450	23.8%
Age 70 to 79	3,140	5.4%	60	3.2%
Age 80 and above	2,195	3.8%	60	3.2%

- Total population is down 0.5% since 2001, compared with an increase of 7.5% City-wide.
- Kelvin makes up 3.3% of the City’s population.
- Compared to the City, Kelvin has 3% more persons aged 5 to 14, and 3% fewer aged 25 to 34.

## Population & Age Groups



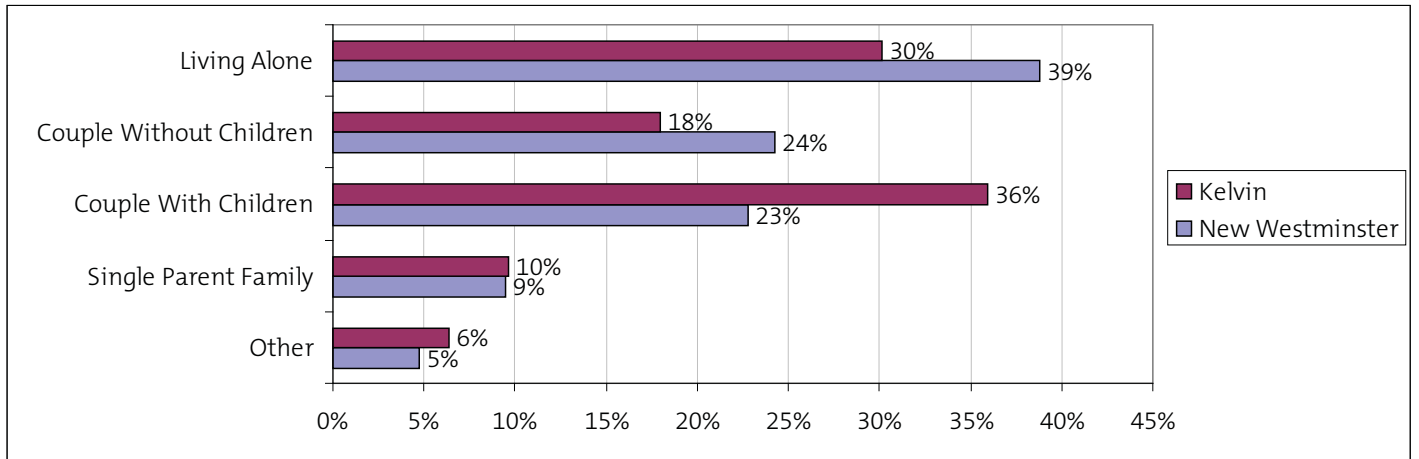
## Types of Households & Mobility

	New Westminster		Kelvin	
	Count	%	Count	%
Total Family and Household Types*	27,585		780	
Living Alone	10,700	38.8%	235	30.1%
Couple Without Children	6,700	24.3%	140	17.9%
Couple With Children	6,280	22.8%	280	35.9%
Single Parent Family	2,605	9.4%	75	9.6%
Other	1,300	4.7%	50	6.4%
Total Households*	27,050		745	
Multiple-Family Households	505	1.9%	35	4.7%
Average Household Size	2.1		2.6	
Population moved within last 5 years	28,885	52.6%	880	49.3%

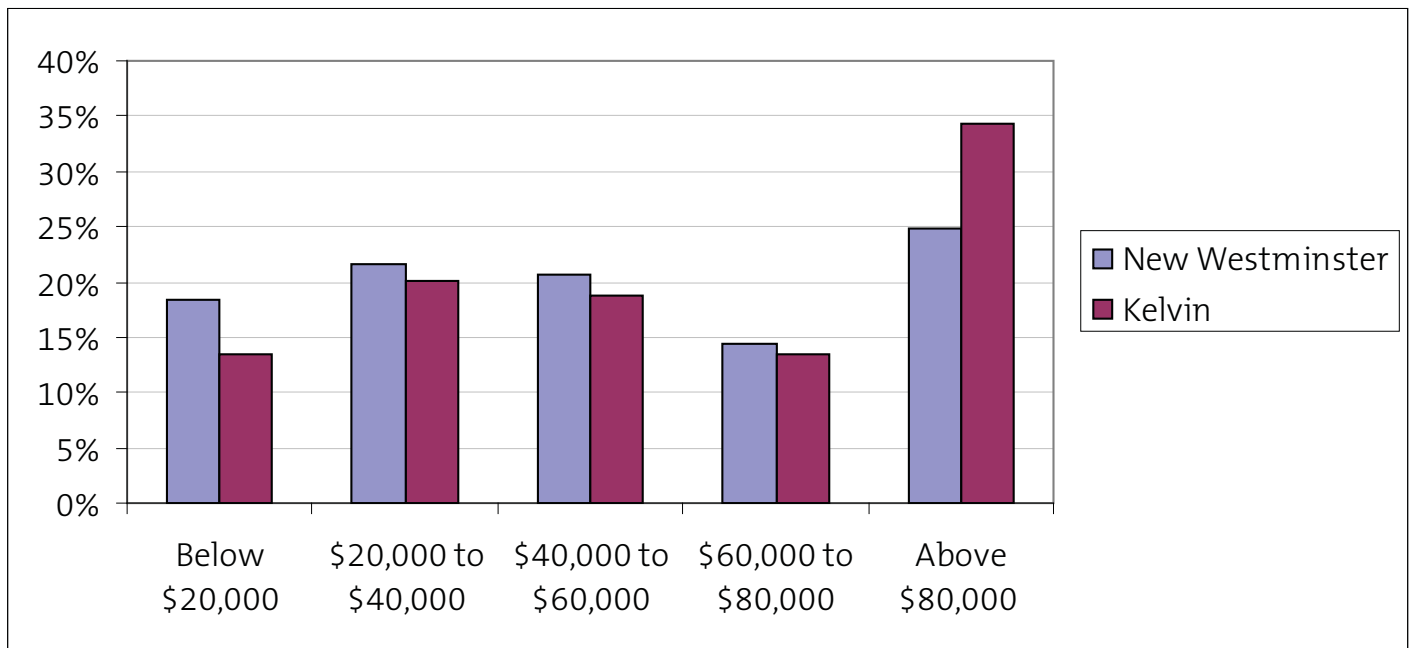
\*Note: The total of family/household types is greater than the number of total households because some families live together in multiple-family households.

- Kelvin's household mix has 13% more couples with children, 6% fewer couples without children, and 9% fewer persons living alone.
- Compared to the City, this neighbourhood has more than twice the proportion of multiple-family households.
- In Kelvin, 3% fewer households have moved within the last 5 years.

## Types of Households



## Household Income



## Household Income

Household income in 2005	New Westminster		Kelvin	
Total Households	27,045		745	
Below \$20,000	4,995	18.5%	100	13.4%
\$20,000 to \$40,000	5,870	21.7%	150	20.1%
\$40,000 to \$60,000	5,575	20.6%	140	18.8%
\$60,000 to \$80,000	3,890	14.4%	100	13.4%
Above \$80,000	6,720	24.8%	255	34.2%
Median household income	\$ 48,773		\$ 59,478	
Average household income	\$ 60,408		\$ 66,756	
Prevalence of low income		20.3%		13.2%

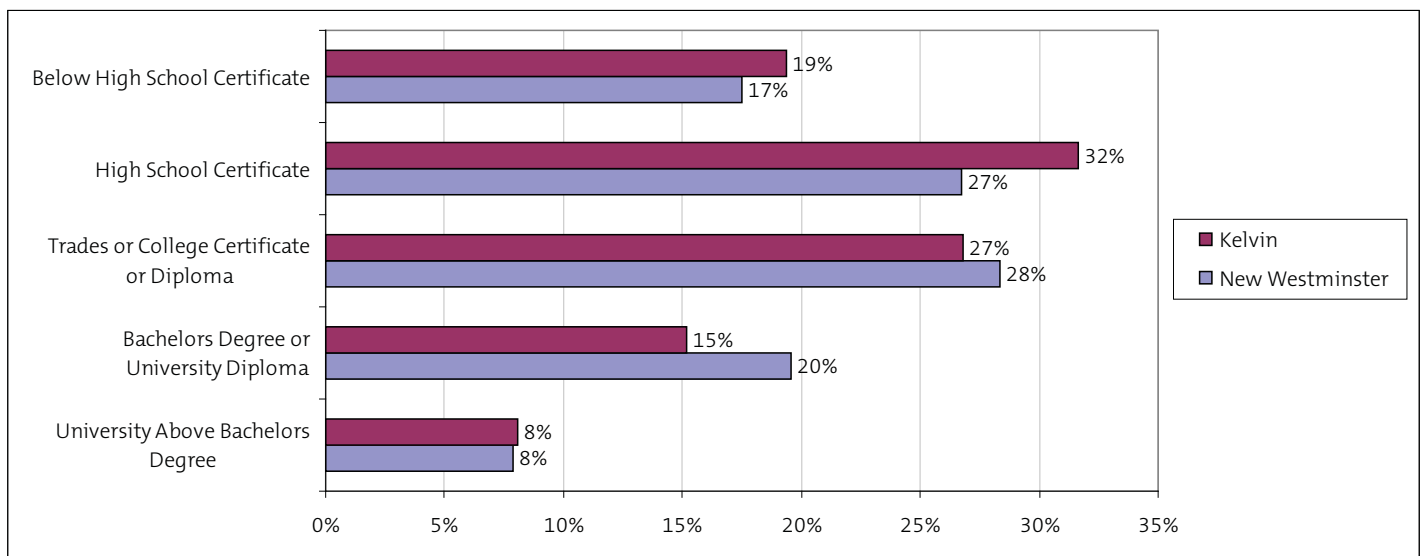
- Compared to the City, in Kelvin there are 5% fewer households in the lowest income category, and 9% more in the highest income category.
- Kelvin's median household income is 22% higher than the City's. Prevalence of low income is low (13%), 7% below the City-wide rate.

## Housing Types, Tenure & Affordability

	New Westminster		Kelvin	
Total Occupied Dwellings	27,050		745	
Apartment	17,875	66.1%	270	36.2%
Townhouse/Duplex	1,145	4.2%	0	0.0%
Single Family	5,055	18.7%	280	37.6%
Single Family with Suite	1,458	5.4%	98	13.1%
Secondary Suite	1,458	5.4%	98	13.1%
Rented	12,495	46.2%	345	46.3%
Owned	14,555	53.8%	395	53.0%
Tenant households spending 30% or more of income on housing	4,895	39.2%	115	33.3%
Owner households spending 30% or more of income on housing	3,710	25.5%	140	35.4%

- An equal proportion of households lives in either apartments or single family homes. Apartment households have a 30% lower share than City-wide. There are no townhouses in the neighbourhood.
- Kelvin has the exact same proportion of renters vs. owners as the City. 6% fewer renter households struggle with affordability, but 10% more owner households spend more than 30% of household income on housing.

## Education



## Education

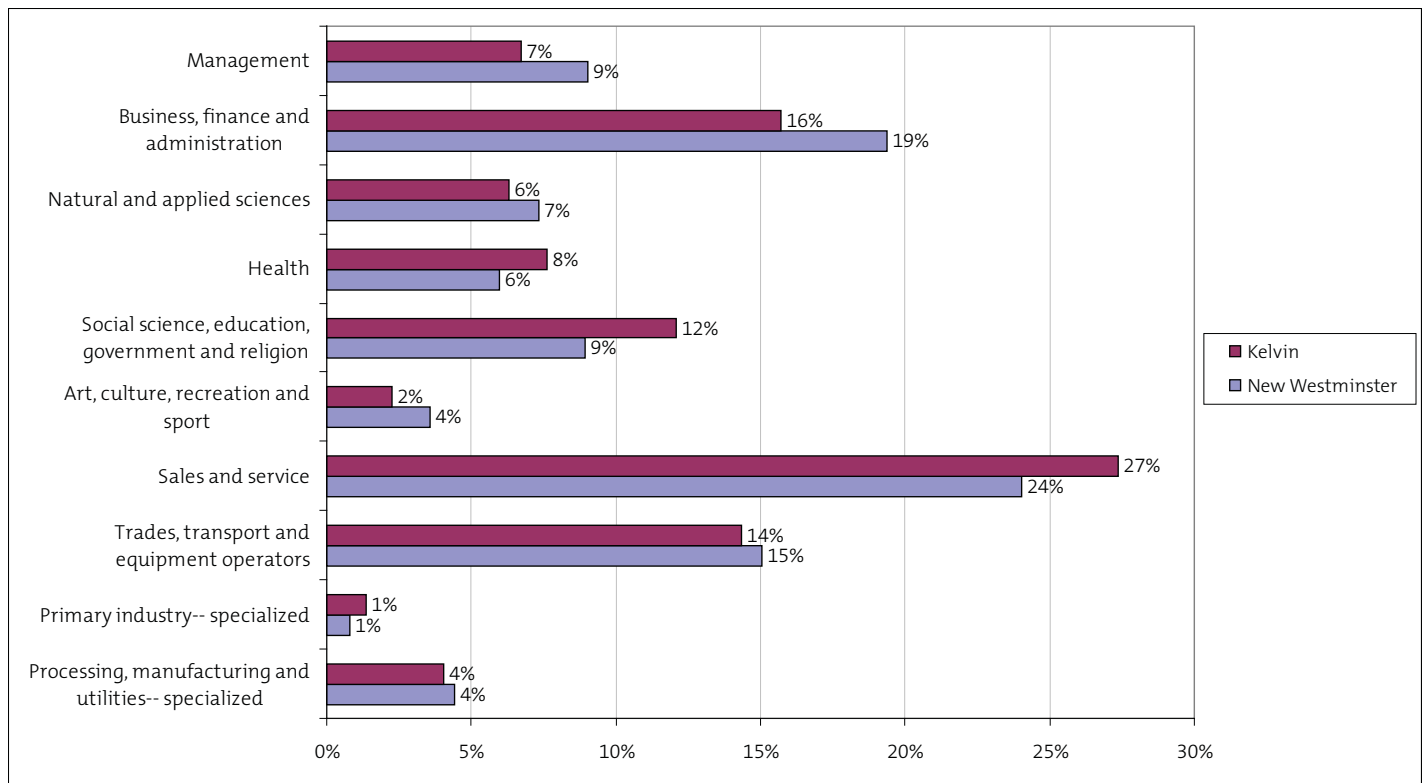
	New Westminster		Kelvin	
Population Aged 15 and over	49,455		1,550	
Below High School Certificate	8,640	17.5%	300	19.4%
High School Certificate	13,210	26.7%	490	31.6%
Trades or College Certificate or Diploma	14,025	28.4%	415	26.8%
Bachelors Degree or University Diploma	9,665	19.5%	235	15.2%
University Above Bachelors Degree	3,910	7.9%	125	8.1%

- Kelvin has 5% more persons with high school graduation as their highest educational achievement. It has 5% fewer persons with a Bachelors degree or university diploma as highest achievement.
- Kelvin's participation rate is 3% higher than the City's. It has the same unemployment rate as the City.
- Compared to the City, this neighbourhood has the same share of residents living and working in New Westminster.
- In Kelvin, there are 3% fewer residents employed in business, finance and administration; 3% more in social science, education and government; and 3% more working in sales and service.

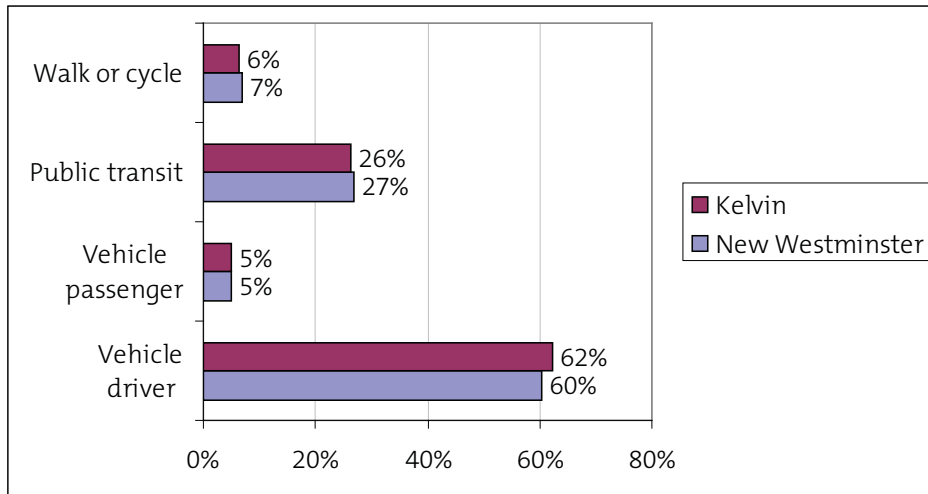
## Labour Force

	New Westminster	Kelvin
Population 15 years and over	49,455	1,550
Labour force 15 years and over	34,260	1,115
Participation rate	69.3%	72.3%
Unemployment rate	5.6%	5.4%
Live and Work in New Westminster (incl. home-based)	20.2%	20.9%

## Occupations



## Mode of Travel to Work



- Kelvin has almost exactly the same profile as the City in terms of how residents travel to work. Kelvin residents are 2% more likely to drive to work.
- Transit's share of work trips is up 16% since 2001, vs. 7% for the City.
- Walking and cycling's share is down 3% since 2001, vs. 2% for the City.
- Driving's share is down 13% since 2001, vs. 4% for the City.

## Ethnic Origin

	New Westminster		Kelvin	
Total population	57,850		1,890	
Single responses	30,775	53.2%	1,015	53.7%
Multiple responses	27,075	46.8%	875	46.3%
<b>Top 10 Ethnicities</b>			<b>Top 10 Ethnicities</b>	
English	15,405		English	520
Scottish	11,645		Canadian	400
Canadian	9,245		Scottish	350
Irish	9,020		Irish	315
German	6,090		German	240
French	4,455		Filipino	205
Chinese	4,245		East Indian	180
East Indian	4,110		French	145
Filipino	3,380		Polish	140
Ukrainian	2,795		Dutch	80

*Note: Table shows both single & multiple responses, so the number of responses is greater than the total population.*

## Home Language

	New Westminster		Kelvin		
Total population	57,845	100.0%	1,885		
Multiple responses	1,635	2.8%	95	5.0%	
Single responses	56,215	97.2%	1,795	95.2%	
<b>Top 5 Languages</b>			<b>Top 5 Languages</b>		
English	45,650	78.9%	English	1,550	82.0%
Punjabi	1,785	3.1%	Filipino	40	2.1%
Filipino	1,000	1.7%	Vietnamese	35	1.9%
Mandarin	980	1.7%	Punjabi	35	1.9%
Korean	820	1.4%	Hindi	35	1.9%

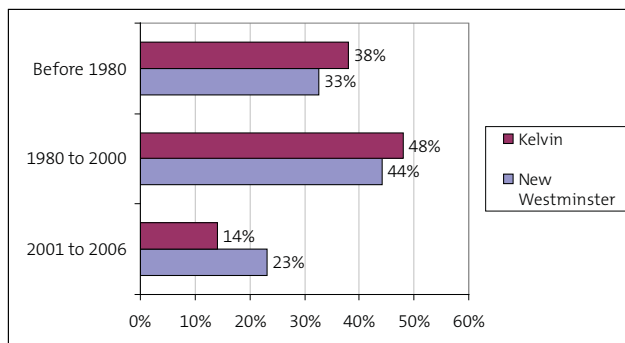
- Filipino, Polish and Dutch ethnic origins are more common in Kelvin. French origin is less common.
- As a home language, English is 3% more prevalent in Kelvin. It increased 11% in prevalence between 2001-2006, notably higher than the City-wide increase of 3% during this same period. There are other home languages spoken in Kelvin, but the total numbers for each of these are very low.

## Citizenship & Immigration

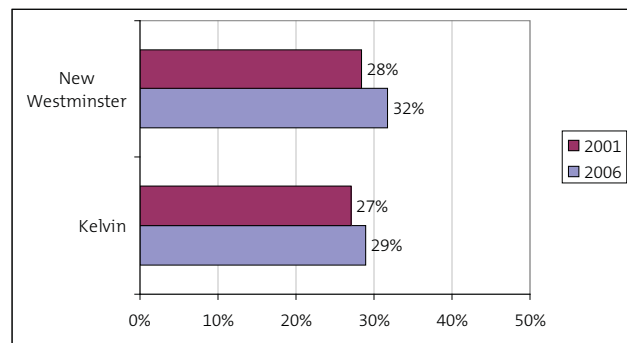
	New Westminster		Kelvin		
Total population	57,850		1,890		
Canadian citizens	52,100	90.1%	1,720	91.0%	
Not Canadian citizens	5,750	9.9%	170	9.0%	
Non-Immigrants	38,630	66.8%	1,315	69.6%	
Immigrants	18,360	31.7%	555	29.4%	
<b>Top 10 Source Countries Overall</b>					
Philippines	2,425	13.2%	Philippines	155	27.9%
India	2,045	11.1%	India	100	18.0%
United Kingdom	1,585	8.6%	United Kingdom	25	4.5%
China	1,430	7.8%	United States of America	25	4.5%
South Korea	795	4.3%	Italy	20	3.6%
Romania	615	3.3%	Vietnam	20	3.6%
Hong Kong	575	3.1%	Fiji	20	3.6%
United States of America	560	3.1%	Afghanistan	15	2.7%
Fiji	370	2.0%	Russia	15	2.7%
Poland	365	2.0%	Poland	15	2.7%
<b>Top 3 Recent Source Countries (2001-2006)</b>					
Total	4,250		Total	80	
Philippines	710	16.7%	Philippines	35	43.8%
China	690	16.2%	India	20	25.0%
Romania	435	10.2%	Afghanistan	15	18.8%

- Canadian citizens make up the same proportion of the population in Kelvin as they do for the City as a whole.
- In Kelvin, immigrants make up a 2% lower share of the population.
- Among source countries for all immigrants combined, the Philippines is more prominent in Kelvin. It has a 15% higher share in this neighbourhood than it does City-wide. Among recent immigrants, the Philippines is even more prominent in Kelvin. Within this group, it has a 27% higher share in Kelvin than it does City-wide.
- As a source country, India has a 7% higher share of total immigrants in Kelvin than it has City-wide.
- Recent immigrants make up 7% of the City's population. In Kelvin they account for 4% of total population.
- Between 2001-2006, the share of immigrants in the City grew by 4%. In Kelvin this share increased by 2%.
- In Kelvin, immigrants were 9% less likely to have come to Canada between 2001 and 2006. They were more likely to have arrived either before 1980, or between 1980 and 2000.

### Period of Immigration



### Immigrants' Share of Population



### Note: How Numbers Add Up in the Census

The Census uses "random rounding" in its data, to round numbers either up or down to multiples of 5. Because of this, some figures differ slightly. For example, New Westminster population may be shown as either 57,850 or 57,845. Both totals can be considered correct and accurate.